

# Issues and Considerations for Defining Urban and Rural in the U.S., Puerto Rico, and Island Areas

Christopher J. Henrie  
Geography Division  
U.S. Census Bureau

COPAFS Quarterly Meeting  
June 5, 2009

# Urban and Rural Classification

- The Census Bureau identifies and classifies urban and rural population and delineates urbanized areas (UAs) after each census using criteria that originated with the 1950 census.
- Since the 1950 census the Census Bureau has reviewed and revised these criteria before each decennial census.
- The Census Bureau identifies and tabulates data for the urban and rural population and territory solely for the purpose of statistical presentation and comparison.

# Census 2000

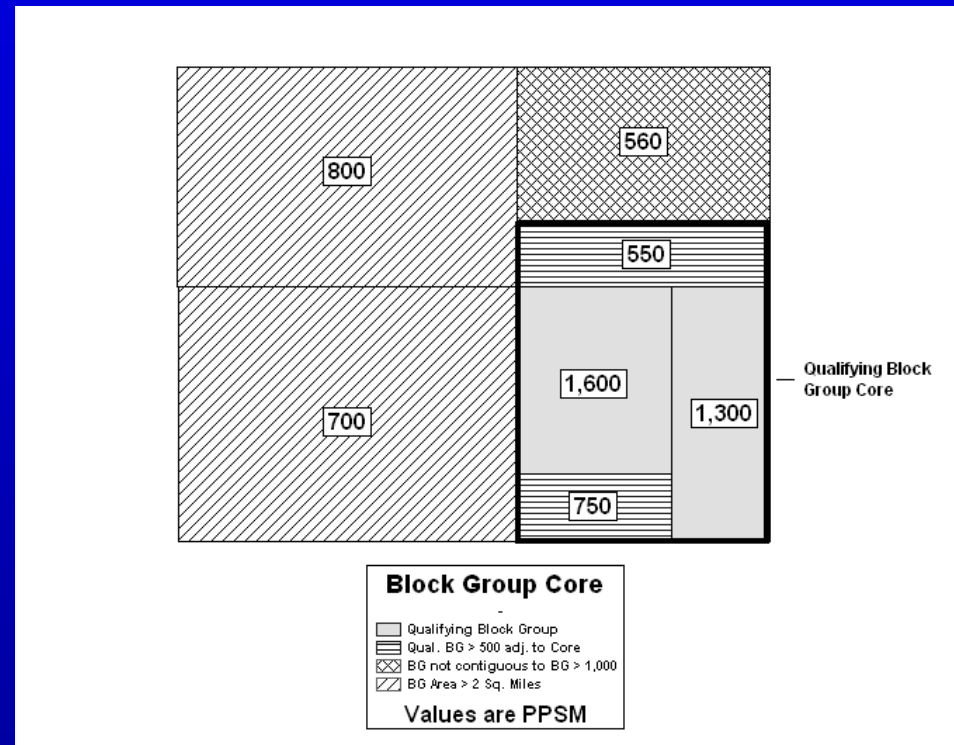
- Provide an objective and uniform nationwide classification and delineation of urban and rural utilizing the technological advancements made over the previous decade
- Redefined classification process from ground up
- New, automated, fully objective approach
- Baseline for future delineations: provide comparable and consistent data for subsequent decades

# Census 2000 Urban Areas

- For Census 2000, an urbanized area (UA) consists of a densely settled core created from census block groups, census blocks, and the adjacent densely settled surrounding territory that together have a minimum population of 50,000 people
- For Census 2000, an urban cluster (UC) consists of a densely settled core created from block groups or blocks and adjacent densely settled territory that together have at least 2,500 people but fewer than 50,000 people

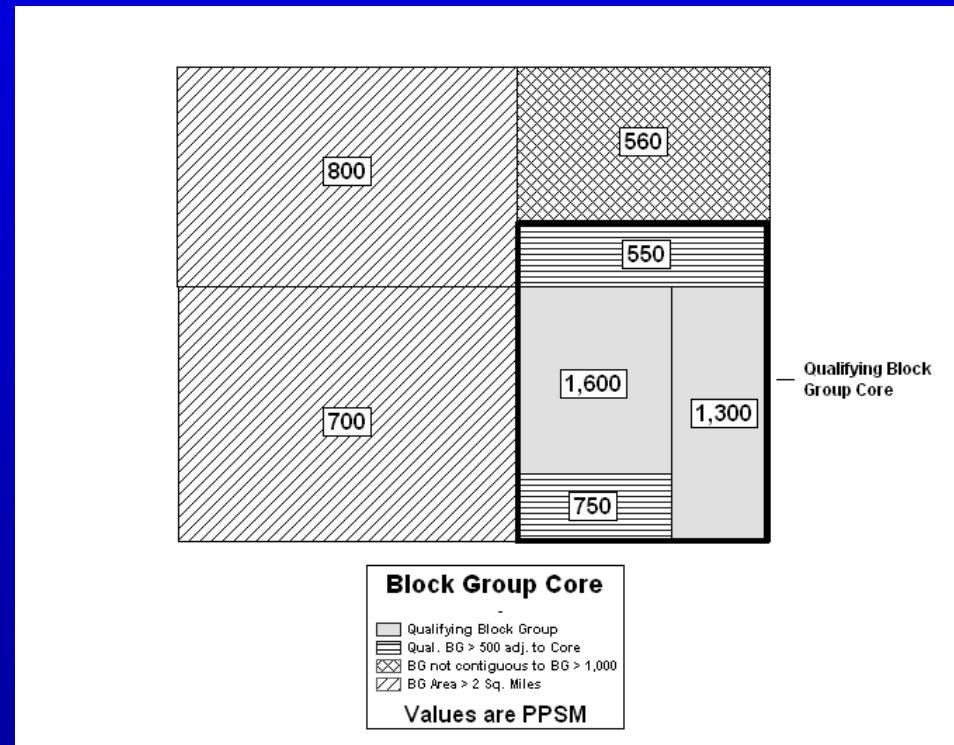
# UA and UC Cores

- Contiguous census block groups that have a total land area less than or equal to two square miles and a population density of at least 1,000 people per square mile (ppsm)
- Contiguous census blocks, if no qualifying block group exists, with a population density of at least 1,000 ppsm



# UA and UC Cores

- Block groups with a land area less than or equal to two square miles and population density of at least 500 ppsm that border block groups with a population density greater than or equal to 1,000 ppsm

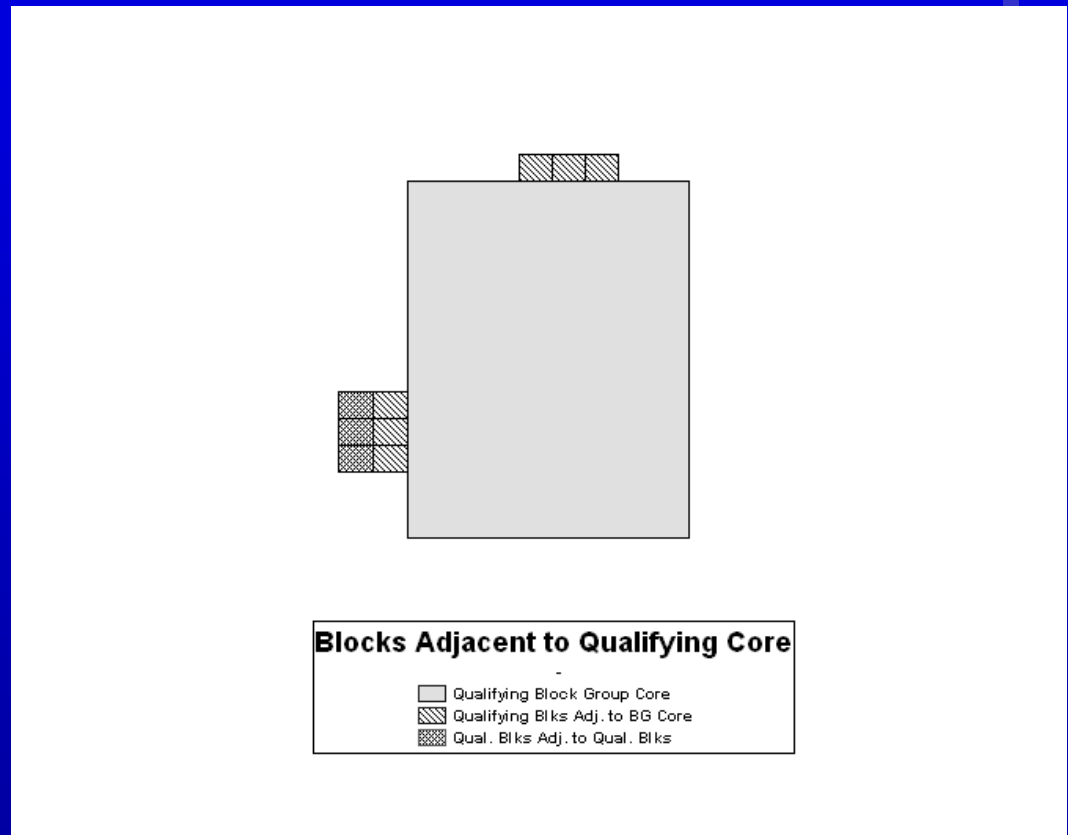


# UA and UC Cores

Contiguous census blocks with a population density of at least 500 ppsm that border qualifying block groups and blocks.

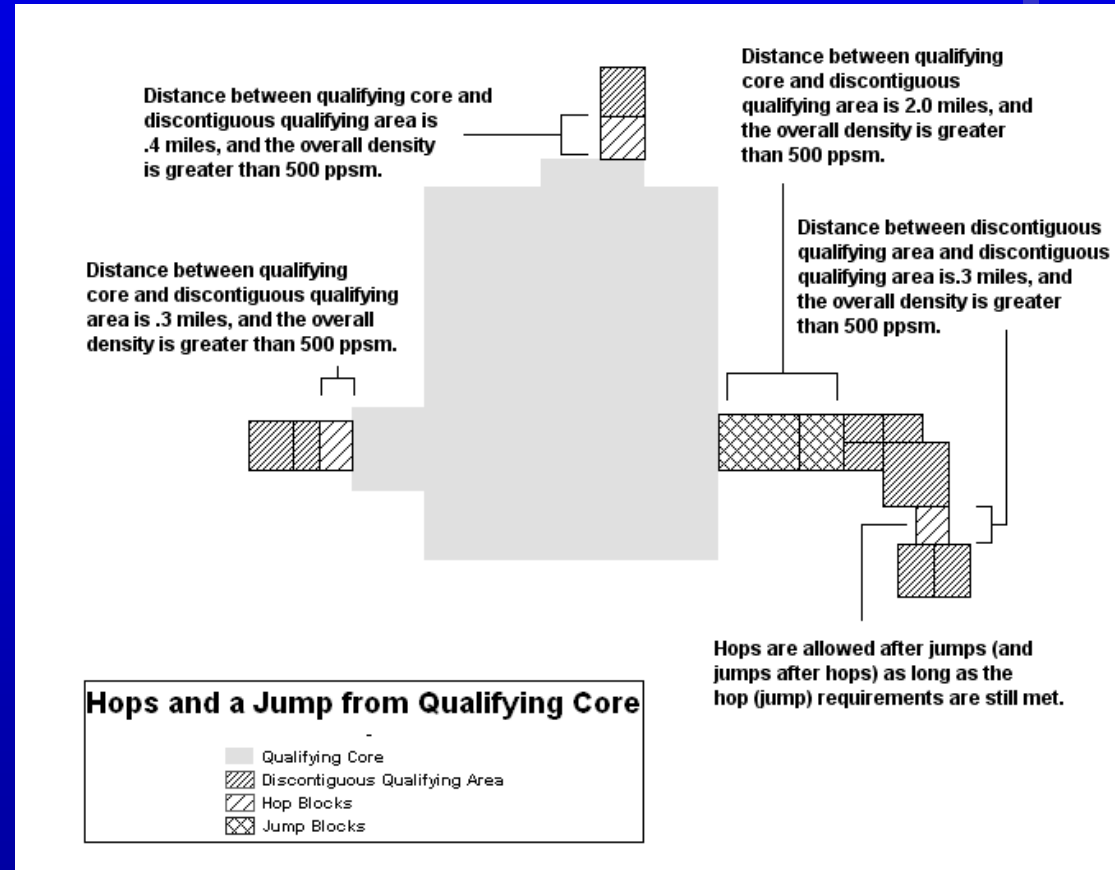
Low density enclaves surrounded by qualifying territory are included if less than five square miles in area.

Blocks forming indentations also are included if specified criteria area met.



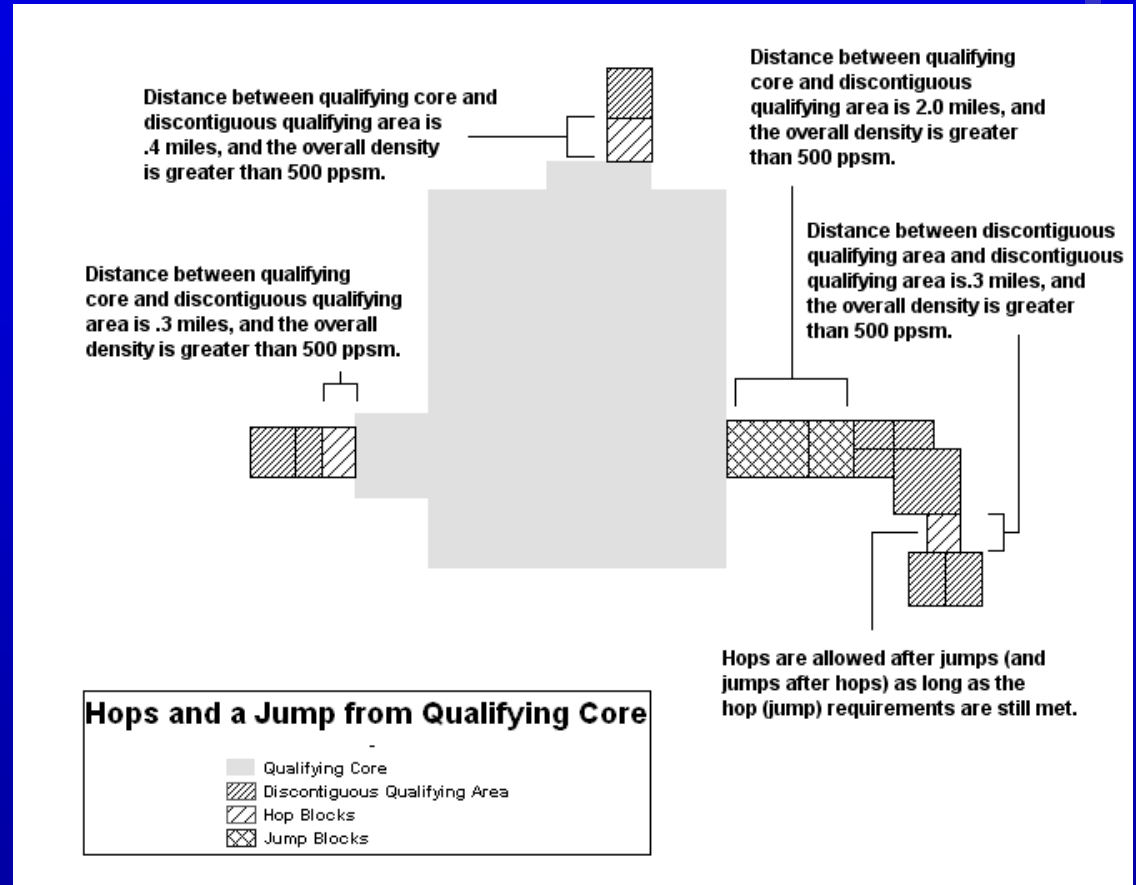
# Hops

- Hops connect discontinuous blocks or BGs with the UA or UC if the overall density is greater than 500 ppsm and the distance along a valid road connection is less than .5 mile from the UA or UC
- Multiple hops can be made along a road connection.



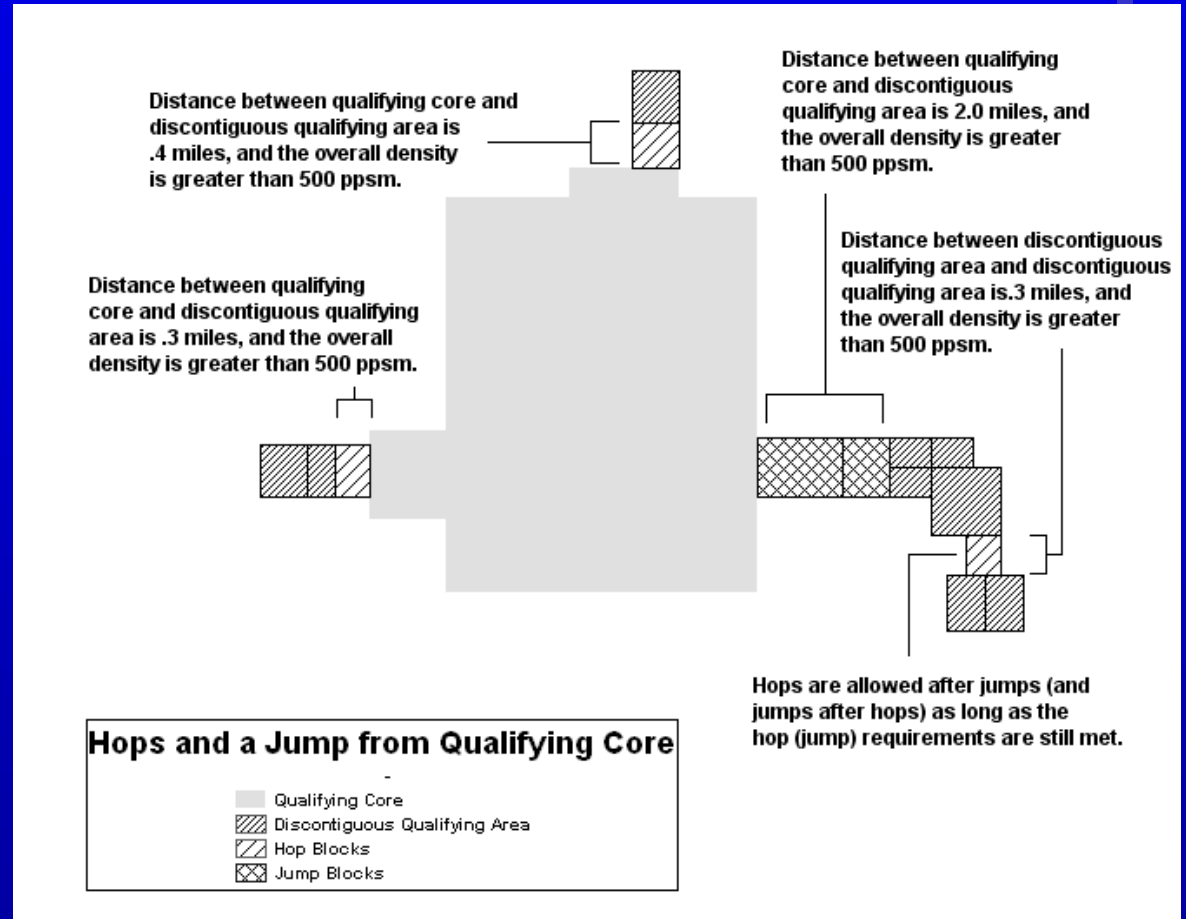
# Hops

- The overall population density of the discontinuous qualifying area and linking blocks must be greater than 500 ppsm
- A discontinuous area qualifies if it has a total population greater 1,000 people
- Multiple hops are permitted even after a jump has occurred



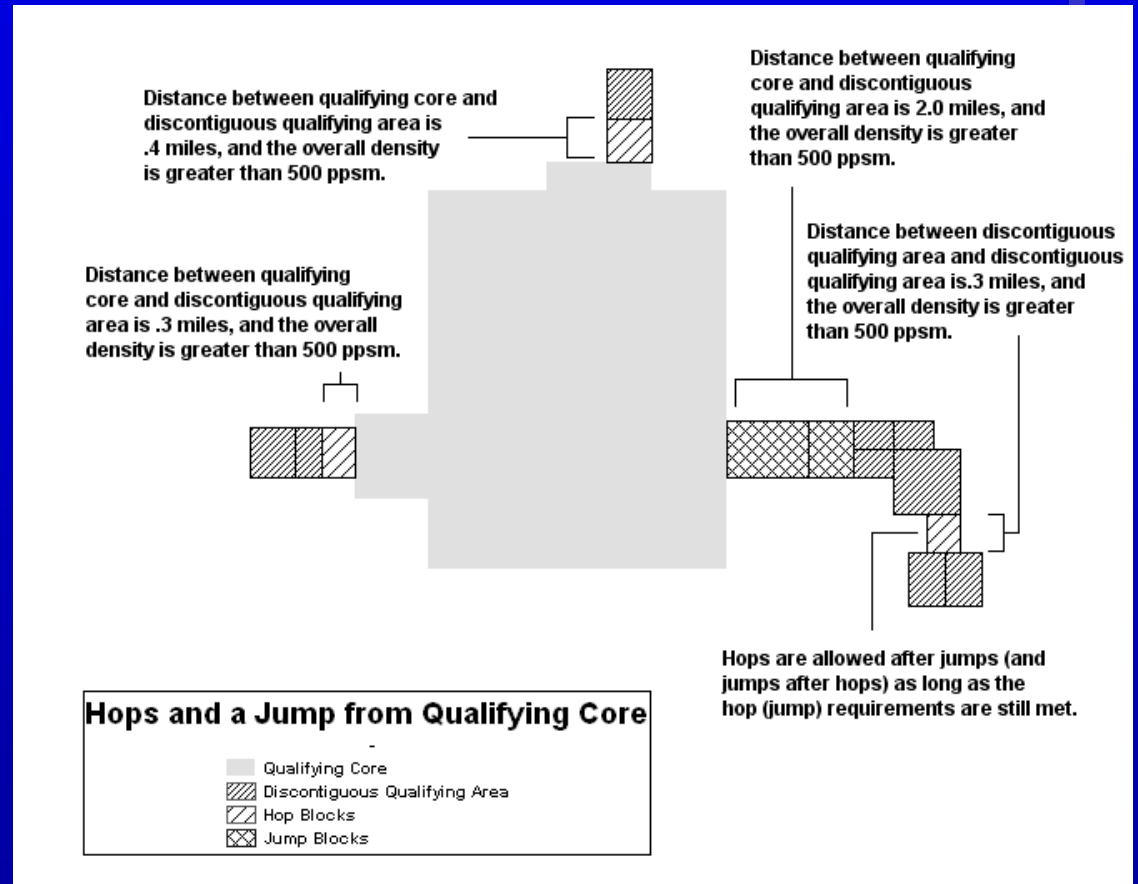
# Jumps

Jumps are used to link discontinuous blocks that meet density criteria and are within 2.5 miles of the UA or UC.



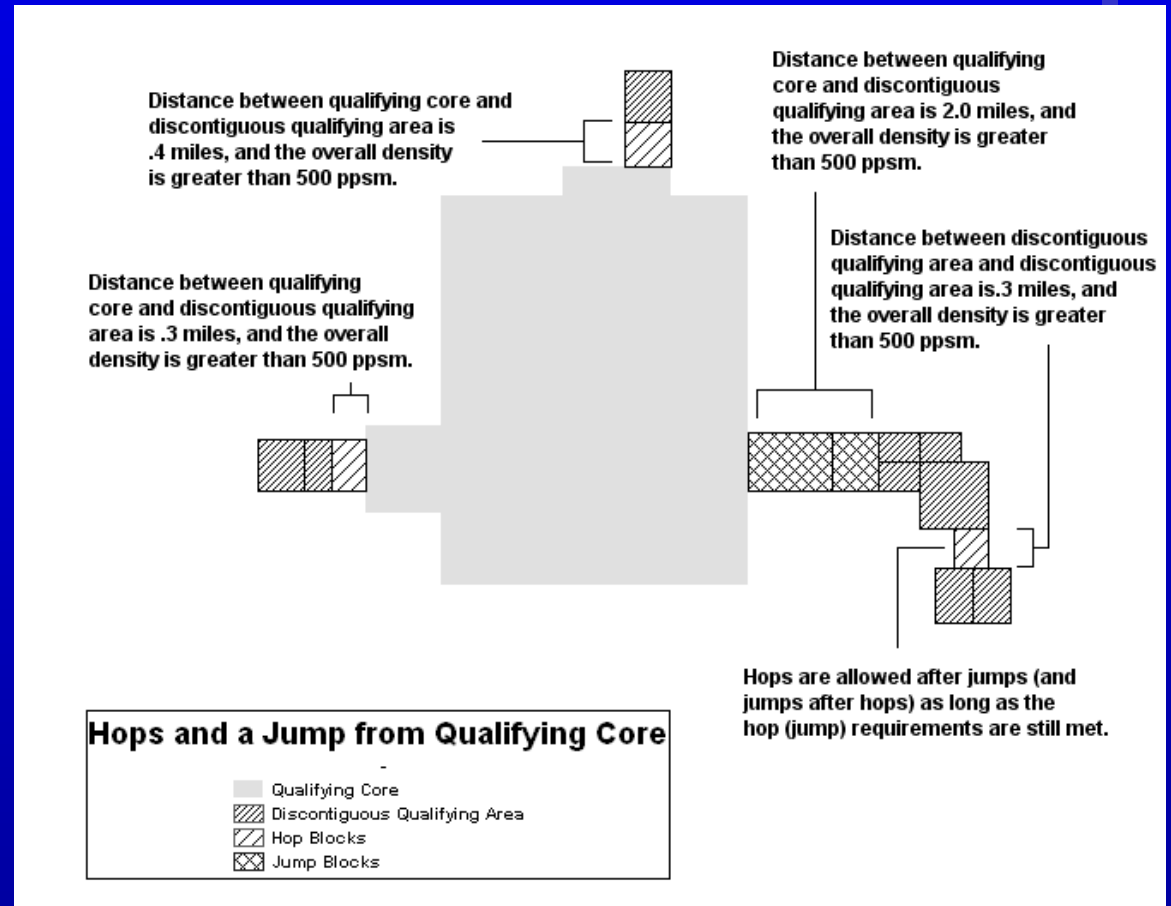
# Jumps

- Overall density of the corridor blocks and the discontinuous qualifying area must be at least 500 ppsm
- or
- Discontiguous qualifying area can qualify if it has a total population greater 1,000 people



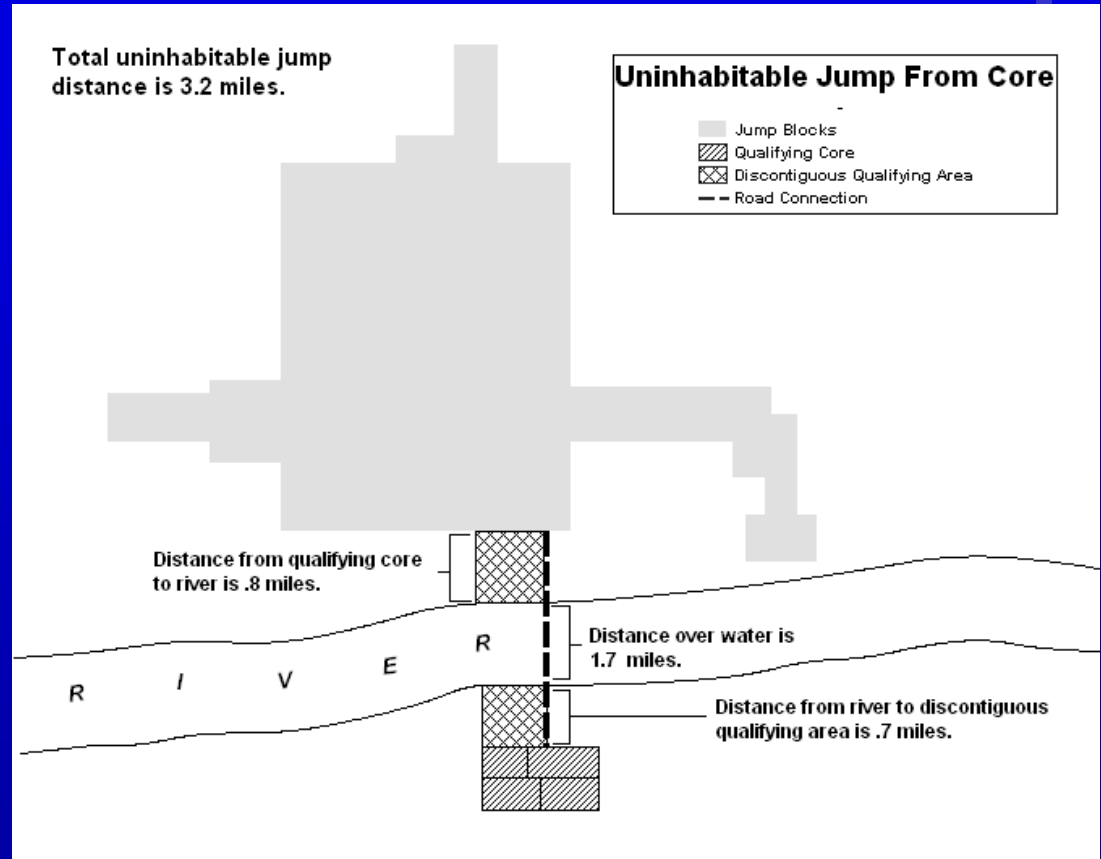
# Jumps

- Only one jump is allowed along a valid road connection.
- Core requires a population greater than 1,500 people before a jump can occur.



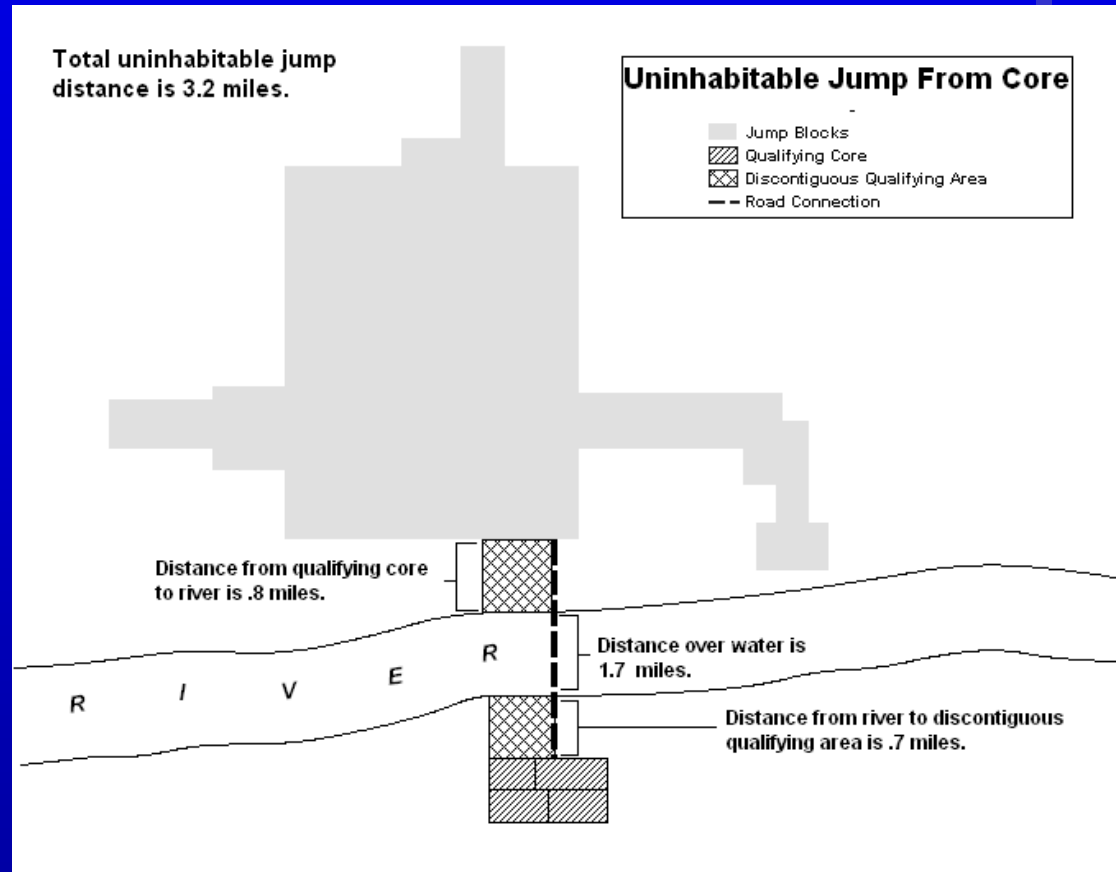
# Exempted Territory

- Discontiguous qualifying territory that is greater than two and a half miles but less than five miles may qualify for inclusion in a UA or UC as long as the distance between the qualifying core and discontiguous qualifying territory includes no more than two and a half miles of habitable territory

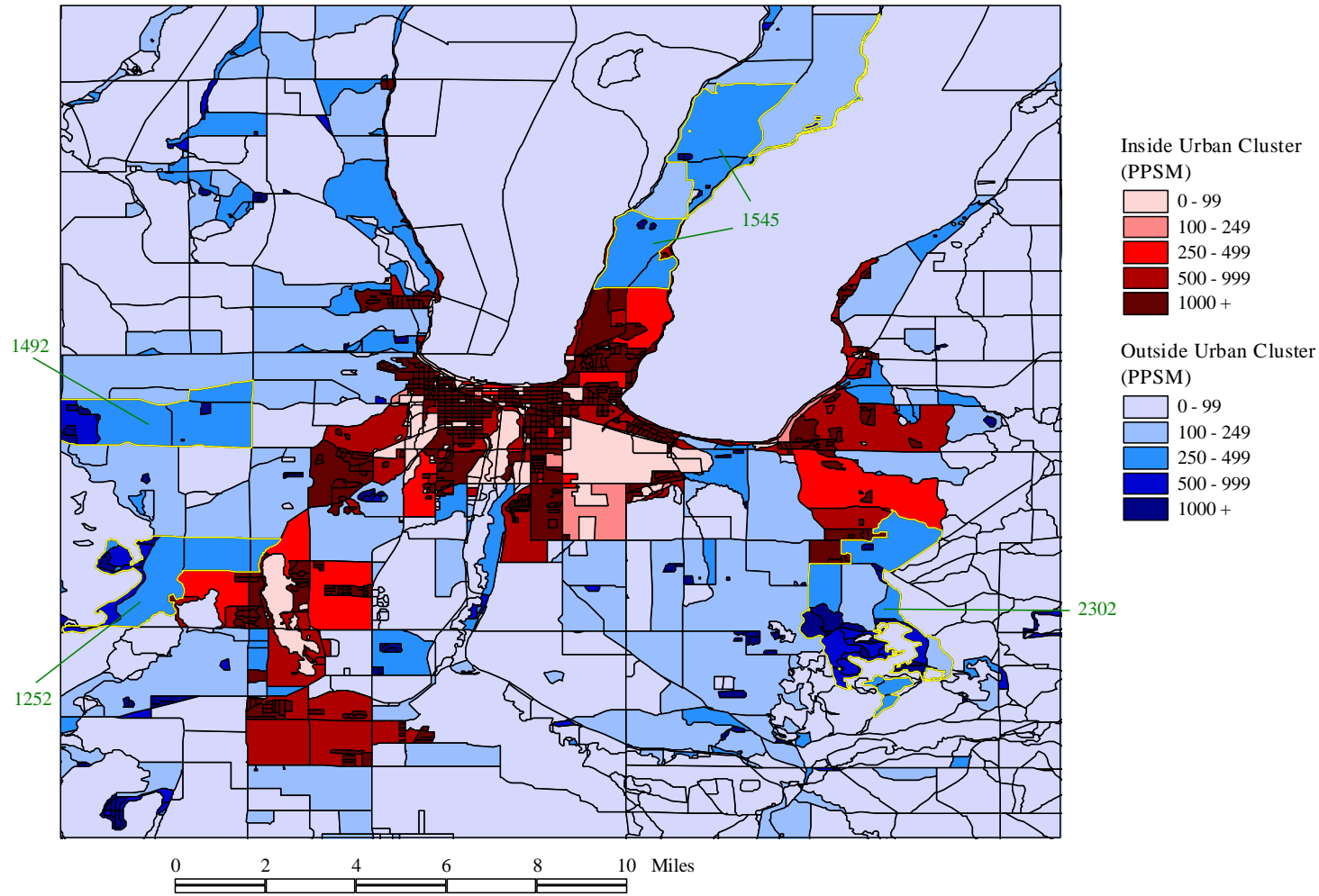


# Exempted Territory

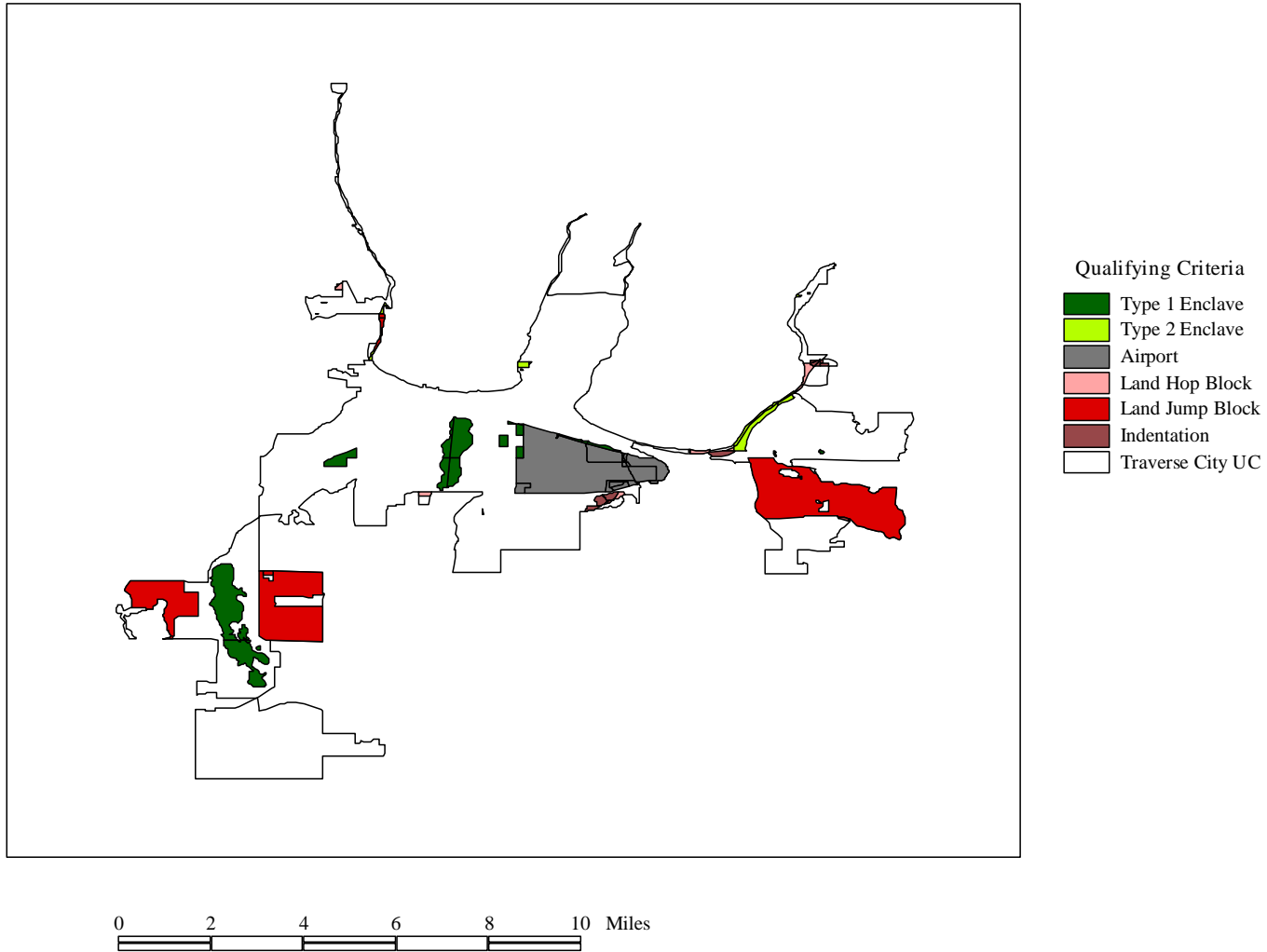
- The population of the discontinuous qualifying territory must be greater than 1,000 people, or the overall population density of the jump blocks and the discontinuous qualifying area must be greater than 500 ppsm
- Exempted territory consists of either water, military, or national parks



### 2000 Population Density by Census Block for Traverse City, MI Urban Cluster and Surrounding Area



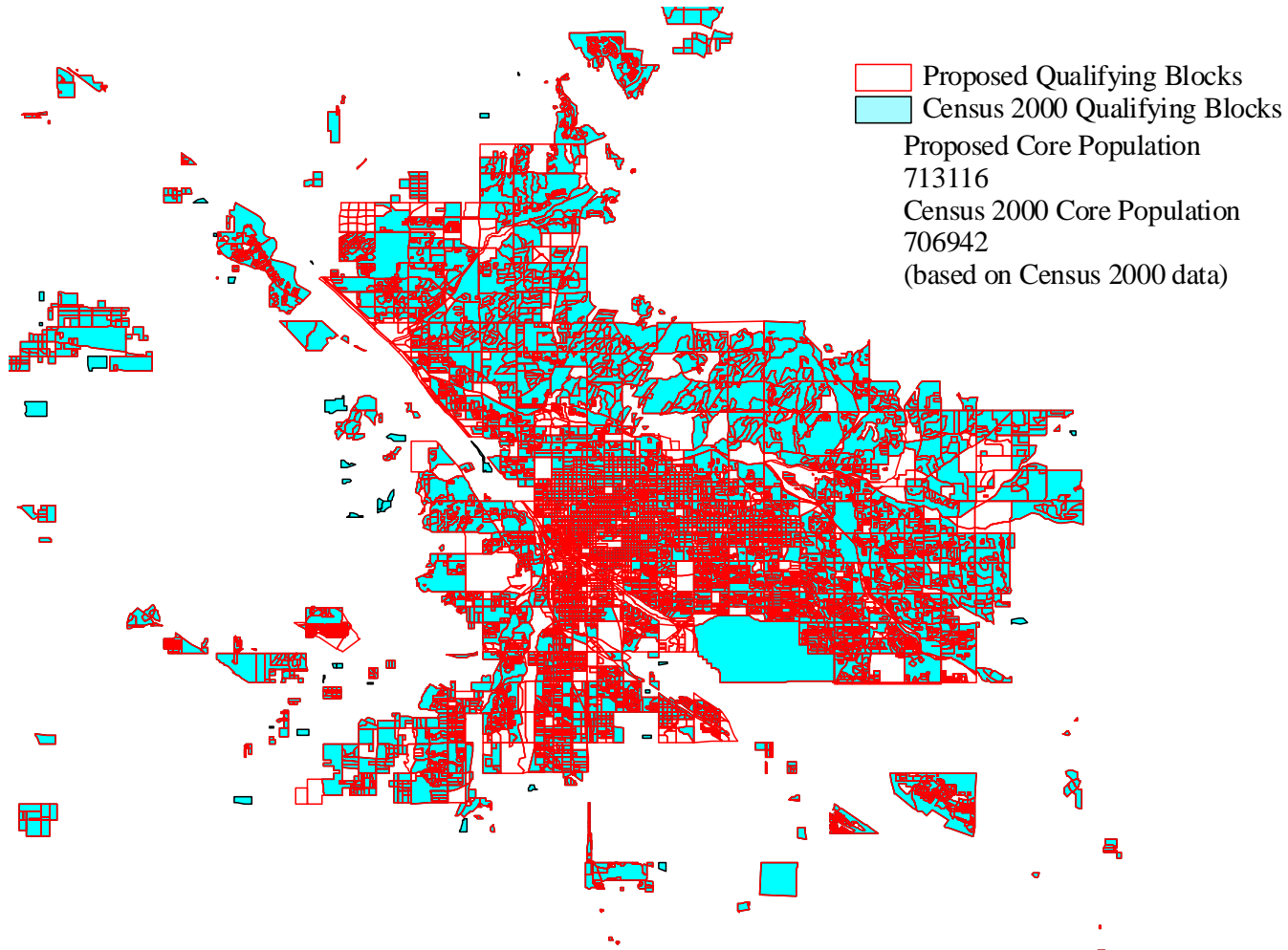
### 2000 Traverse City, MI Urban Cluster Census Blocks Qualifying on Criteria other than Population, Density, and Size



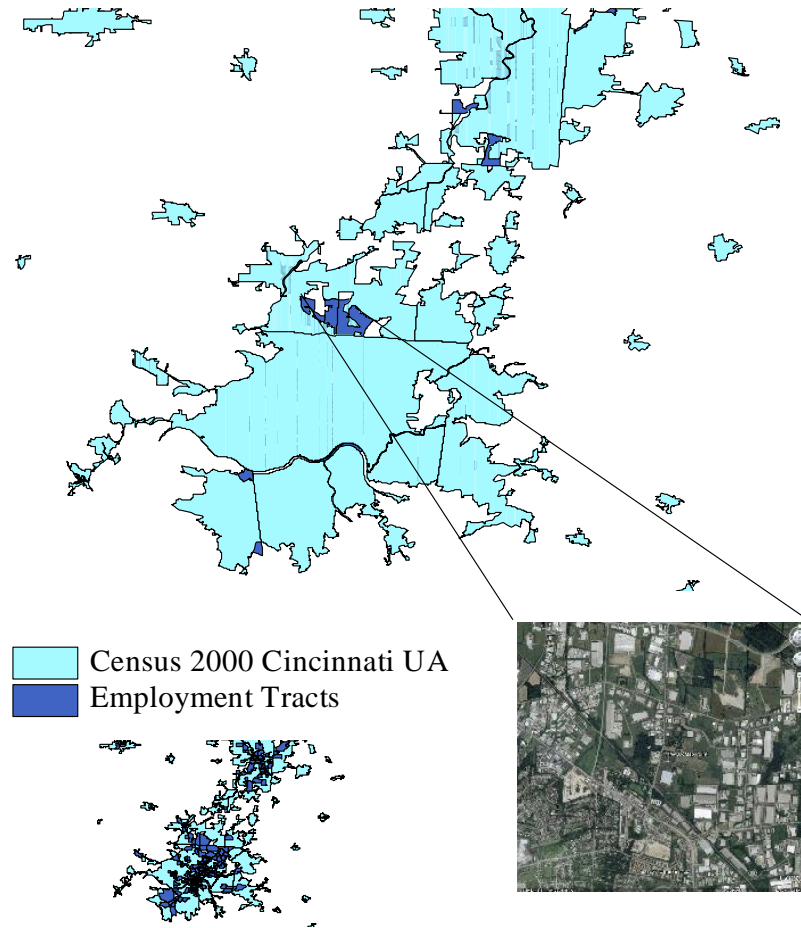
# 2010 Urban Area Program

- Remain committed to an objective, equitable, and consistent nationwide urban area delineation.
- Retain decennial comparability by building upon 2000 criteria.
- All potential modifications are refinements, or supplements to address deficiencies encountered for Census 2000.

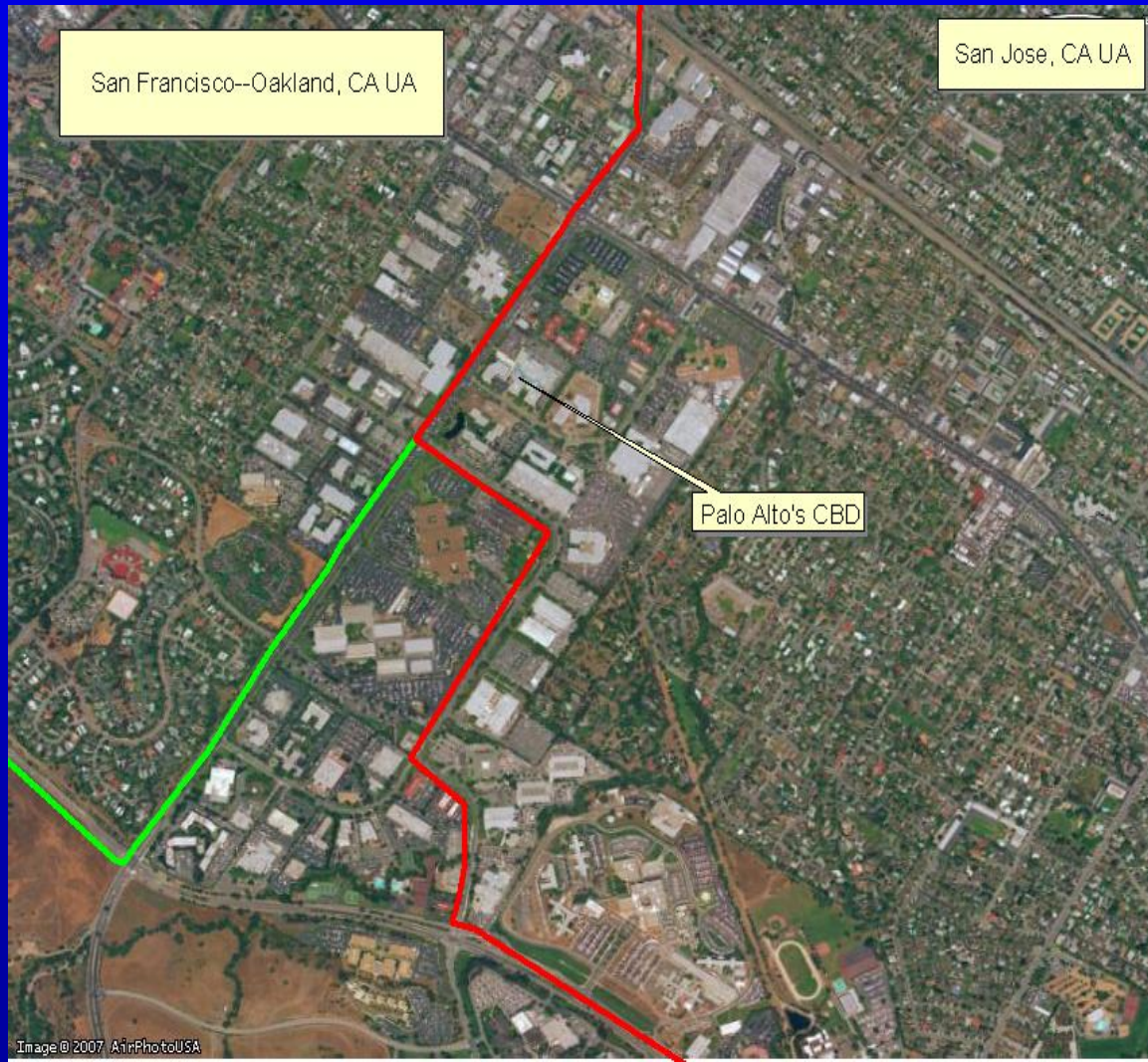
# Comparing Tucson UA Core Qualifying Blocks Based on Block Groups and Tracts Using Census 2000 Data



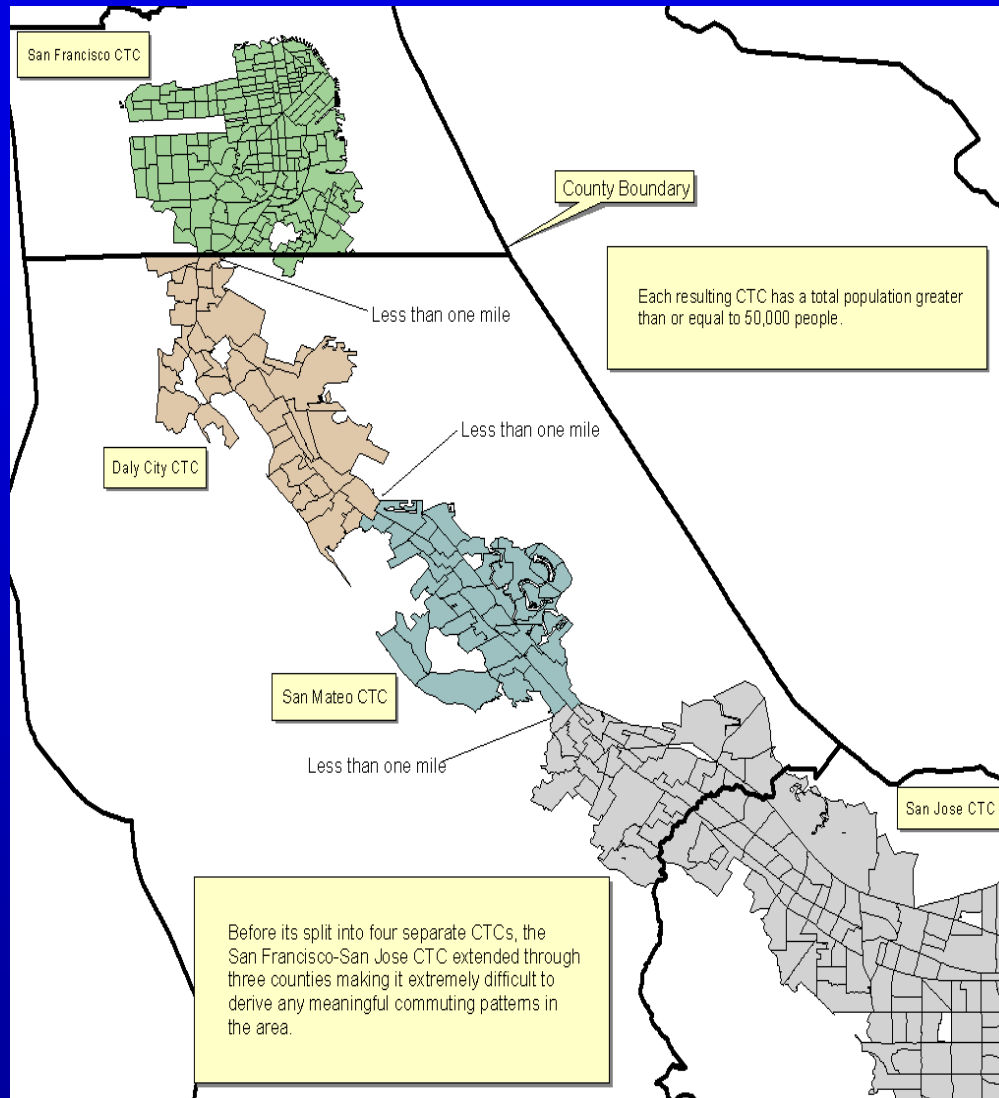
# Cincinnati UA Qualifying Core Employment Tract



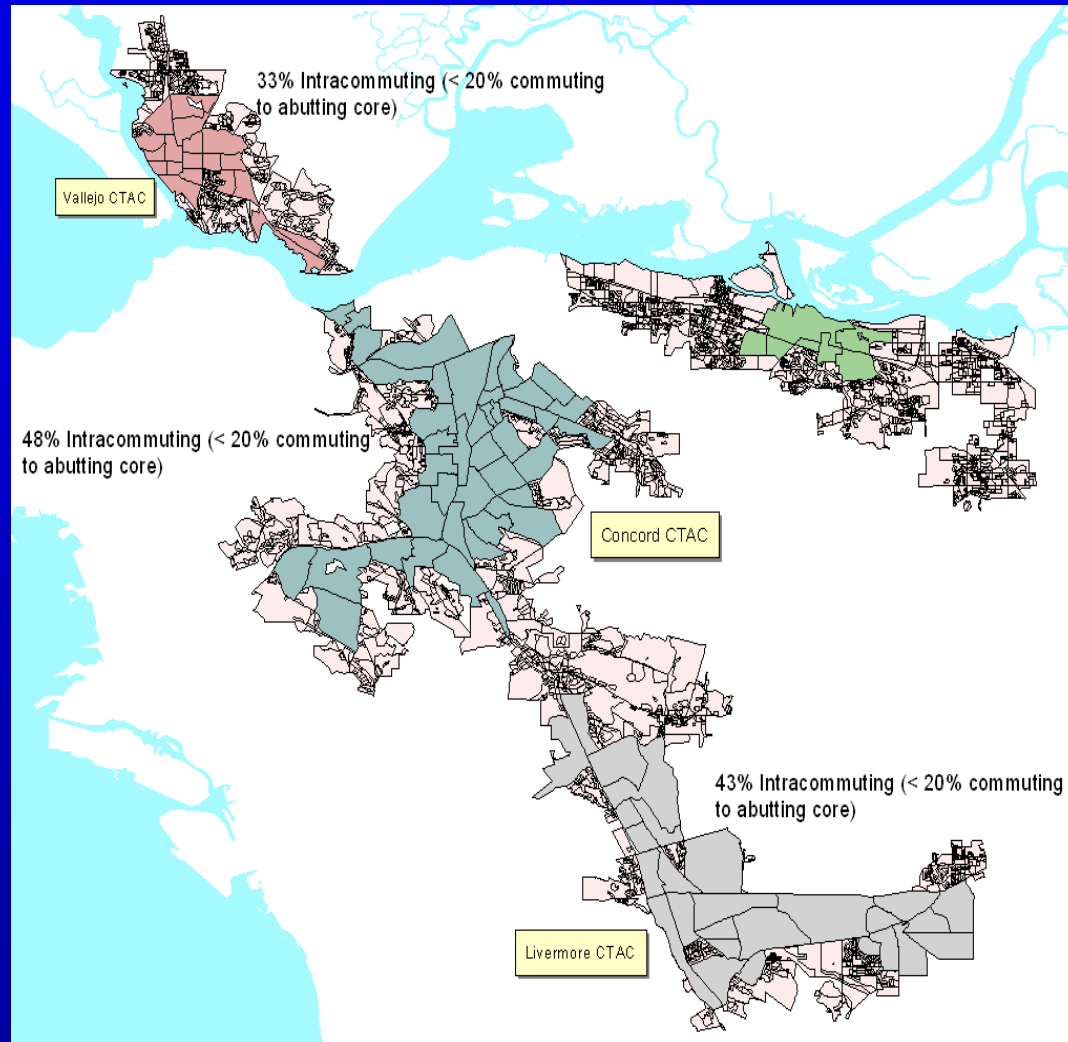
# The 2000 San Francisco-Oakland and San Jose UA Split



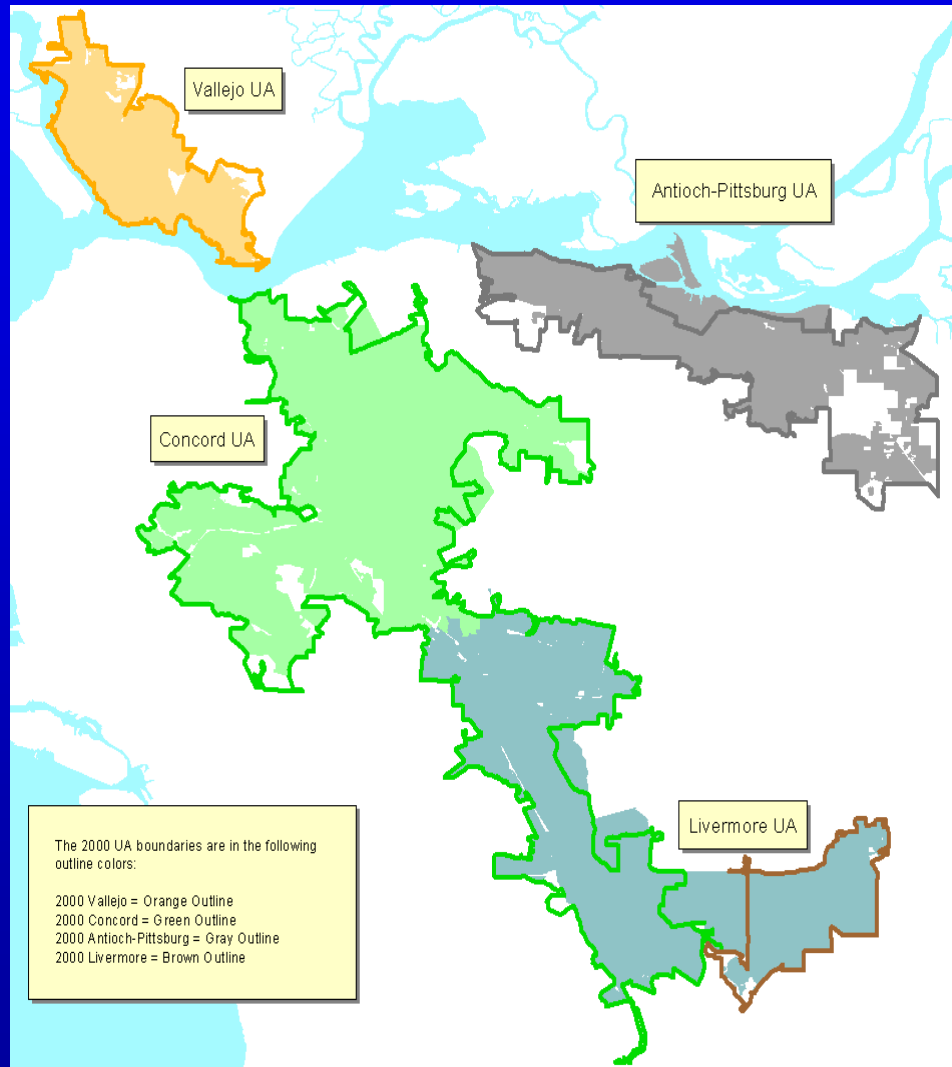
# San Francisco-Oakland and San Jose CTC Split



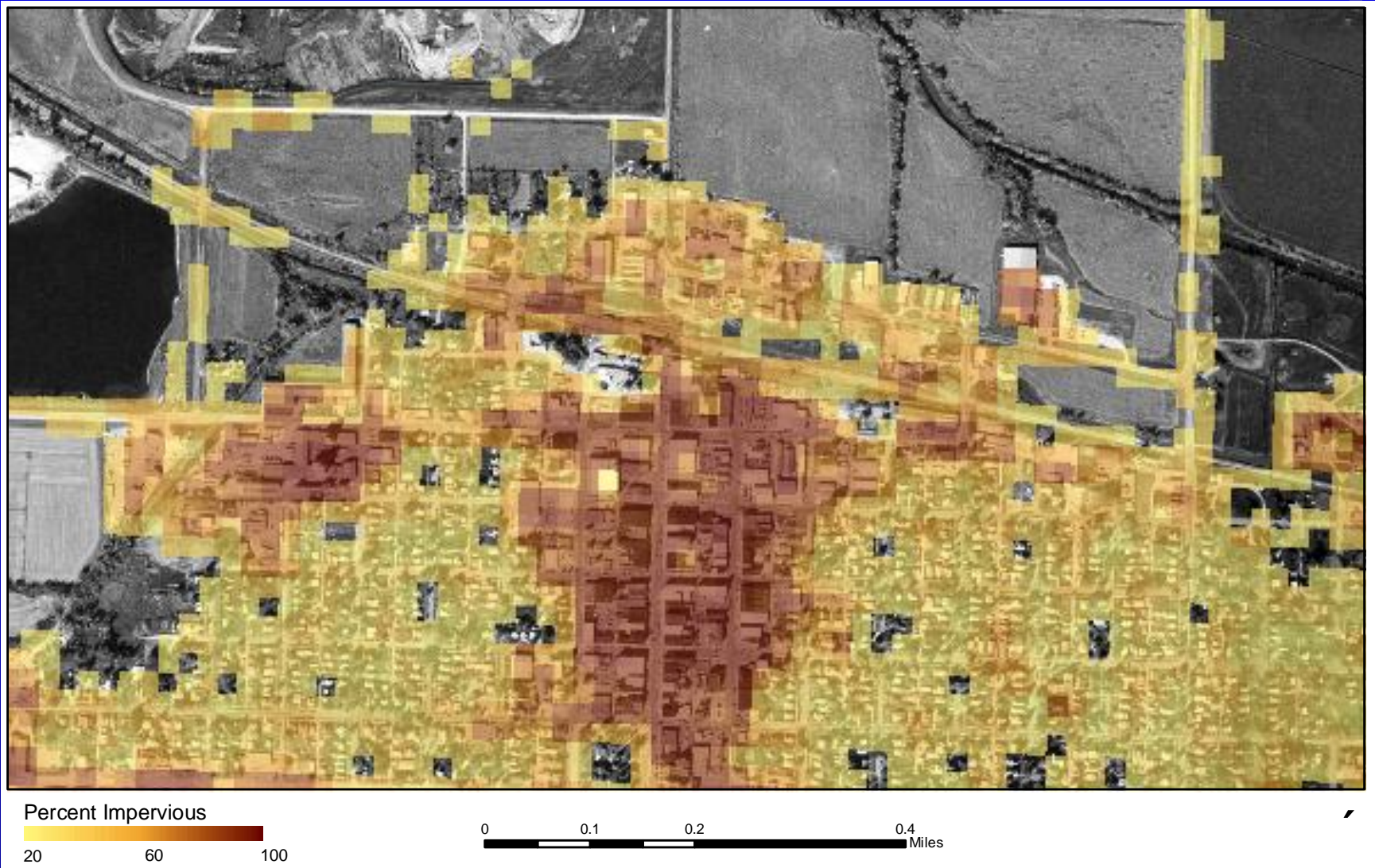
# Determining Qualifying CTACs for UA Splits



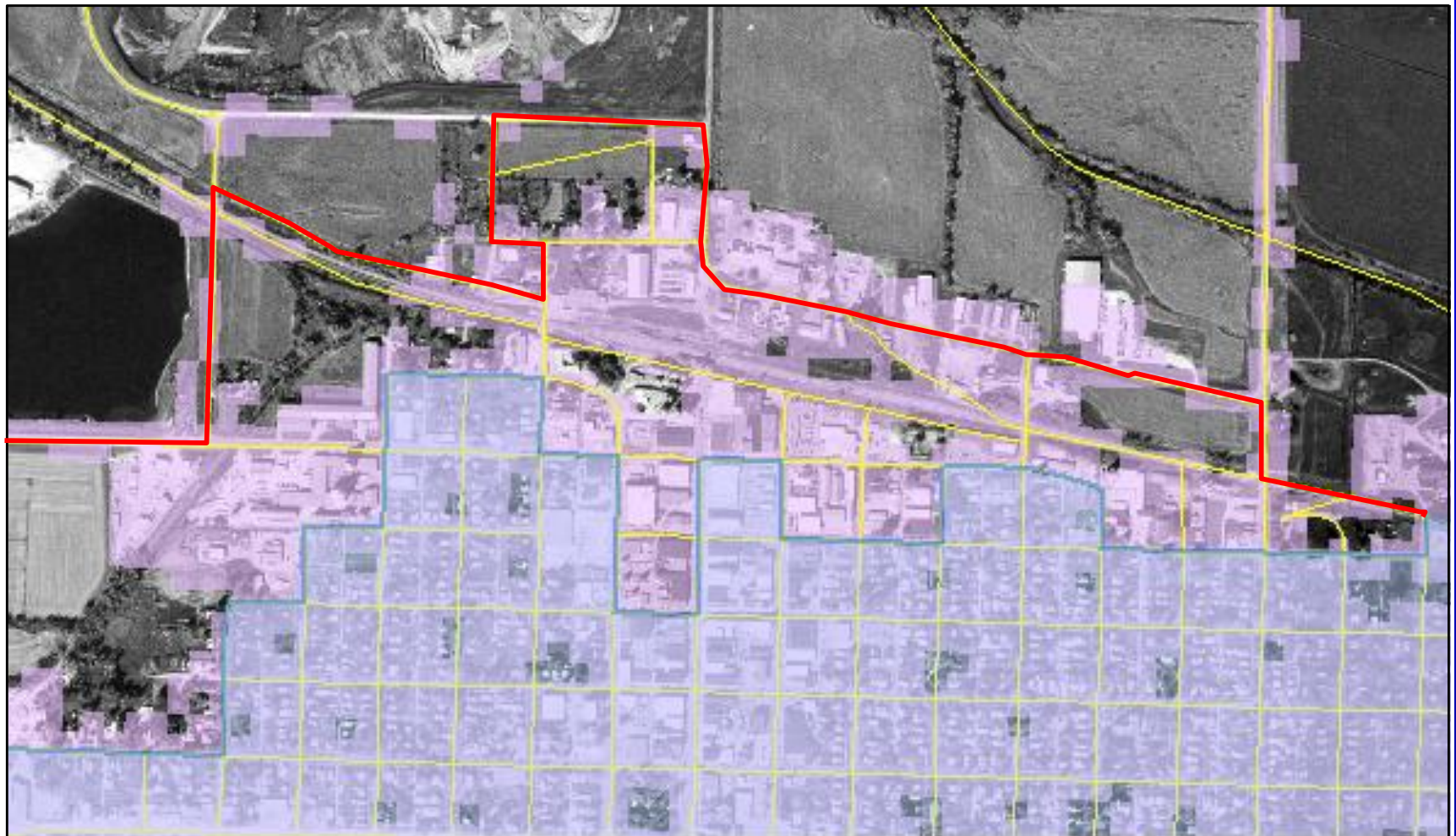
# Concord and Livermore UA after Split







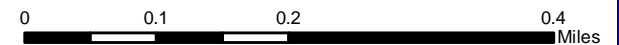
# Impervious Land Cover in Atlantic, IA



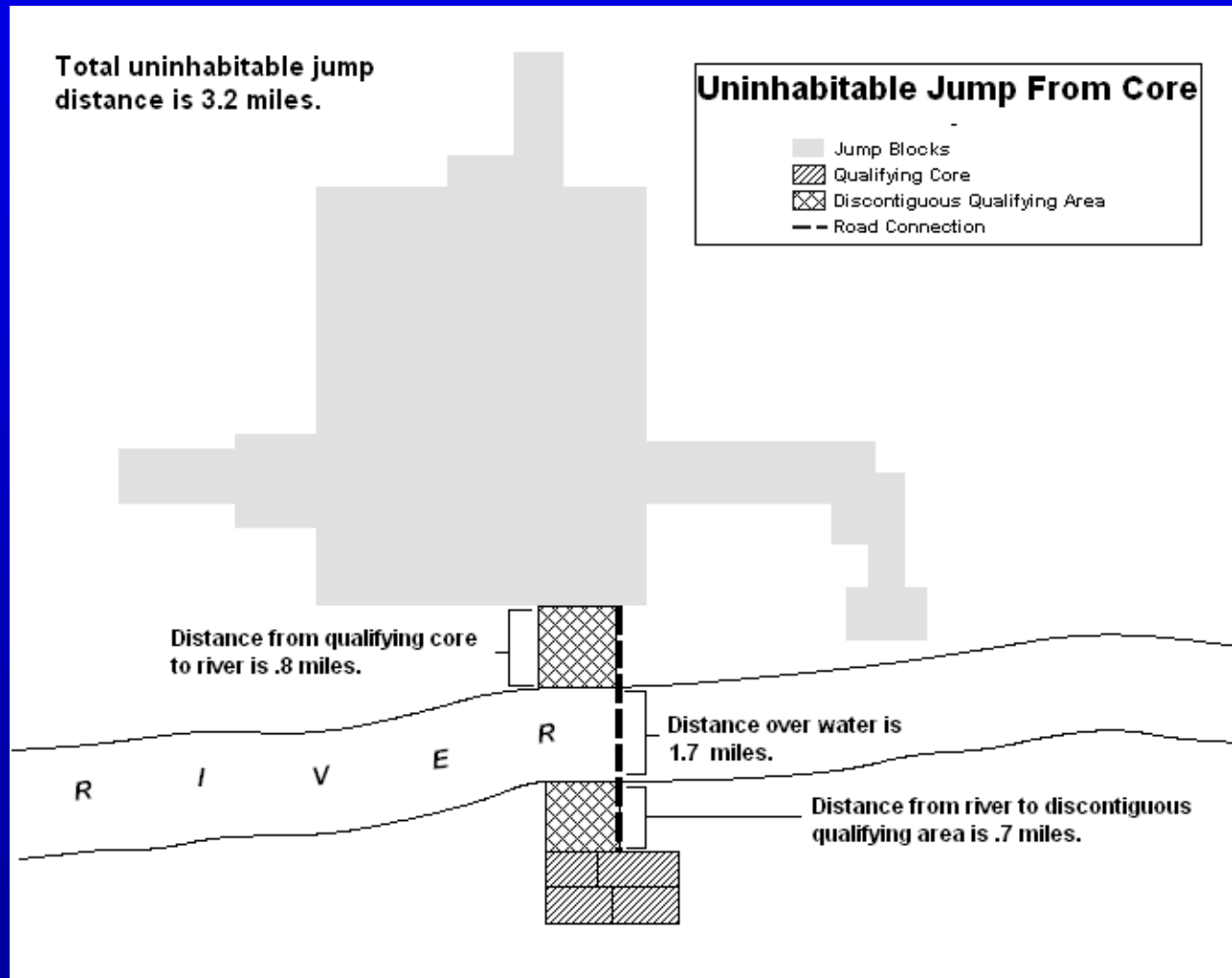
# Boundary Using Proposed Impervious Criteria



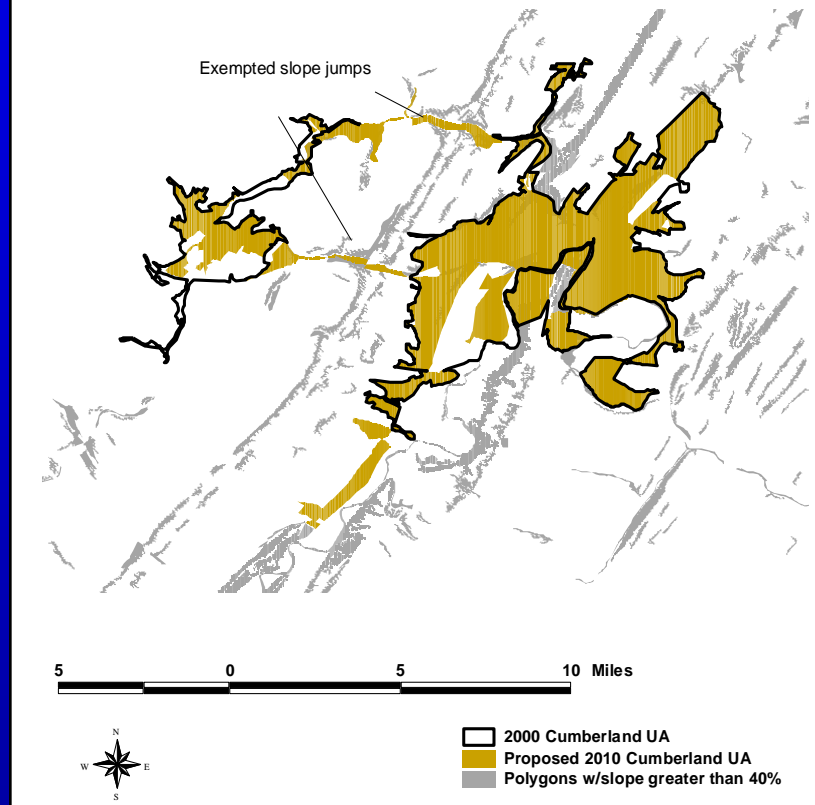
-  Urban Area Boundary Using Impervious Land Cover
-  2000 Urban Area
-  Impervious Land Cover
-  Census Blocks



# Additional Land Use/Land Cover Data as Exempted Territory

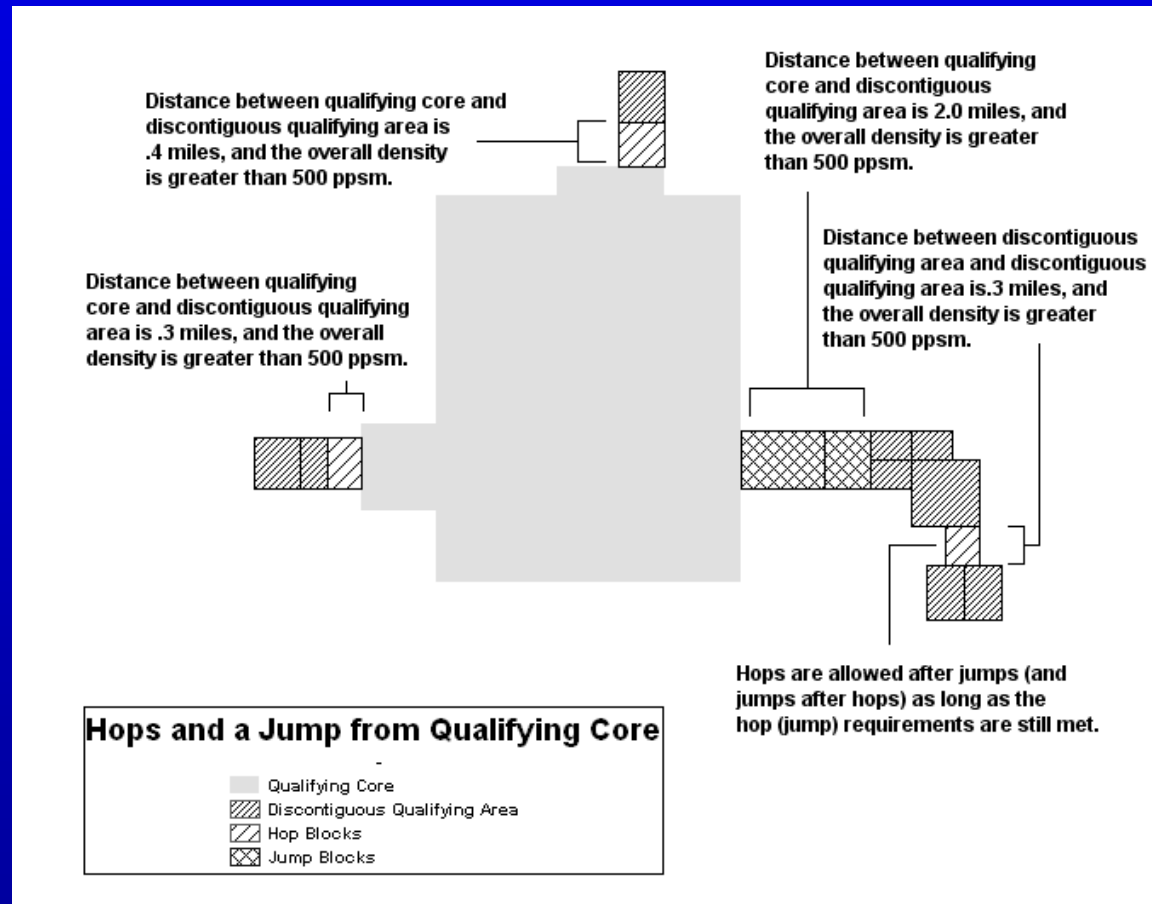


## Cumberland, MD and Surrounding Area

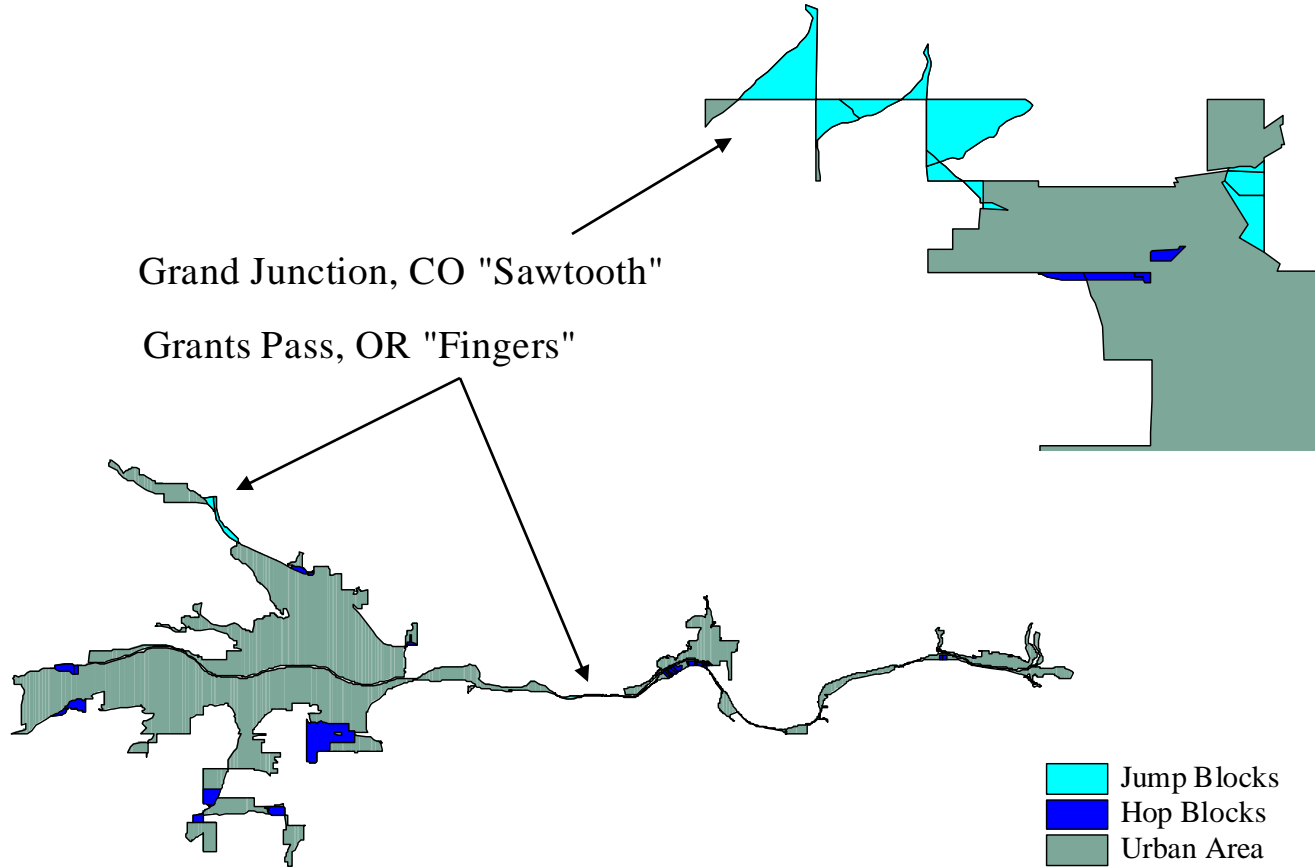


# Modify Jump and Hop “Corridors”

- Current Jump and Hop criteria includes both qualifying territory and intervening census blocks along road connection that forms the highest overall population density

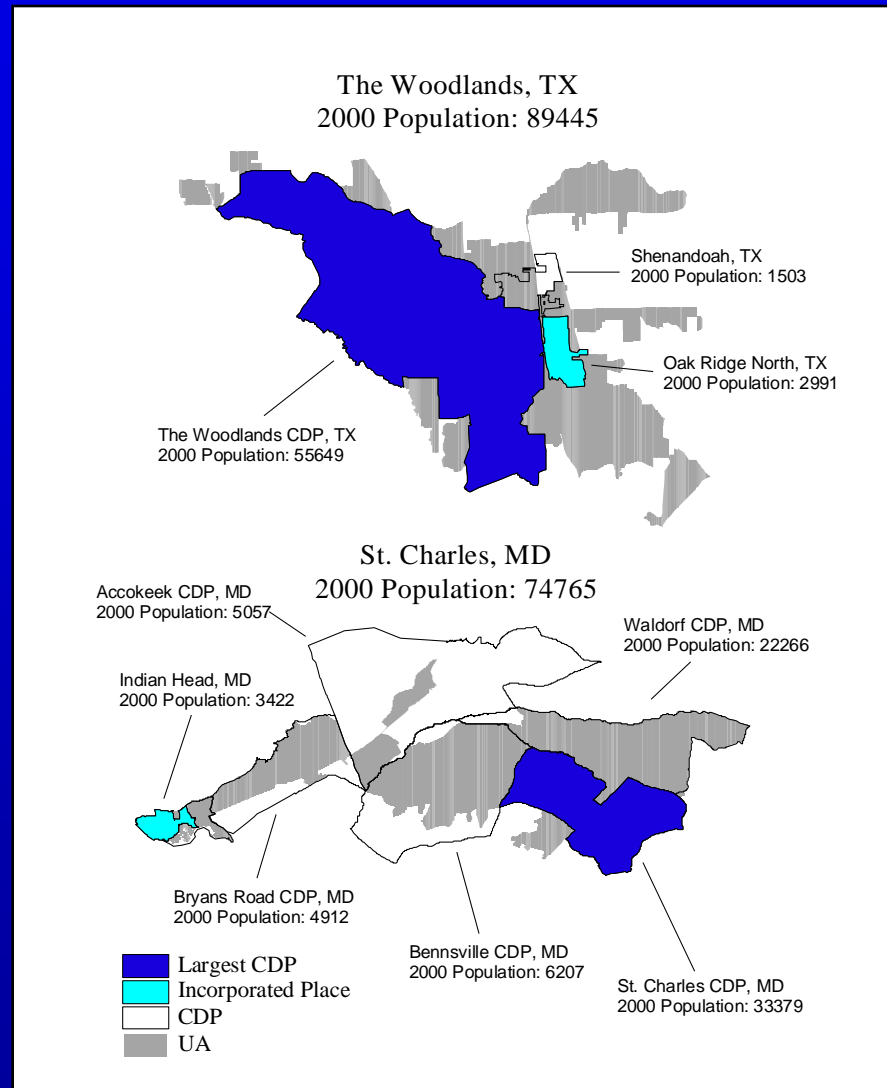


# Hop and Jump Corridor Examples



# Central Places

- Outdated concept; no commonly agreed upon criteria for defining “central place.”
- Principal cities defined within CBSAs;
- Central places are not necessary for UA or UC delineation.
- Lack of consideration of place boundaries in delineation process results in central places split between urban and rural portions.



# Questions? Comments?

Chris Henrie

Geographic Standards and Criteria Branch

Geography Division

U.S. Census Bureau

[christopher.j.henrie@census.gov](mailto:christopher.j.henrie@census.gov)

(301) 763-9086