

Update on the U.S. Census Bureau's New Dissemination Platform COPAFS

April 13, 2018

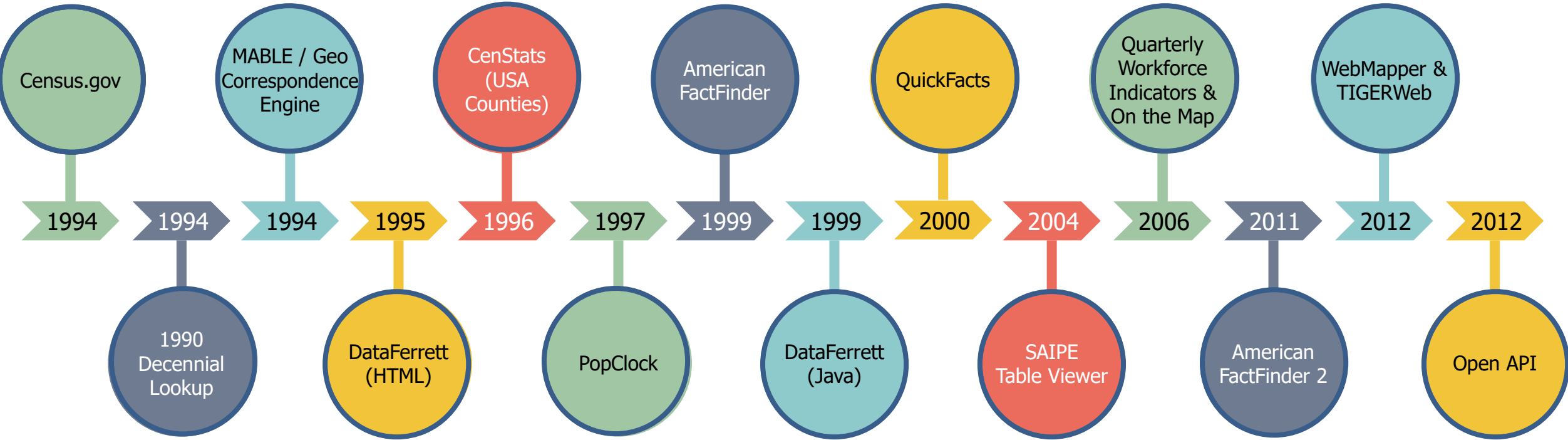
Census Bureau Mission

To serve as the leading source of quality data about the nation's people, places, and economy.

We honor privacy, protect confidentiality, share our expertise globally, and conduct our work openly.



Census Bureau Online History



Census.gov Today



FactFinder

Community Facts

Guided Search | Advanced Search | Download Center

Popular Items

More and More

QuickFacts UNITED STATES

TABLE | MAP | CHART | DASHBOARD

Census Business Builder: Small Business Edition

1. When type of business do you want to start?

2. Select your business type

3. Select the location to research

4. Review the data on a map

5. Create a report

My Tribal Area

Community of Tribal Area

Select a State

Select a City

The Census Bureau collects data for the American Indian (AI) and Alaska Native (AN) populations. Tribal area data and maps are available to selected statistics to American Community Survey (ACS). The ACS provides demographic, social, economic, and housing data for tribal areas. Community maps are powered by the Census Appellate Project (CAAP).

Source: 2011-2012 American Community Survey 5-Year Estimates

The Opportunity Project

Bringing together government and business digital tools that help start and grow businesses

Learn More

My Congressional District

Now Includes Business Statistics for Congressional Districts

Congressional District

Population	18,500,000
Male	9,250,000
Female	9,250,000
White	75%
Black	15%
Hispanic	5%
Other	5%
Median Age	35
Total Area	100,000
Population Density	185
Population Change	10%
Population Change	10%
Population Change	10%

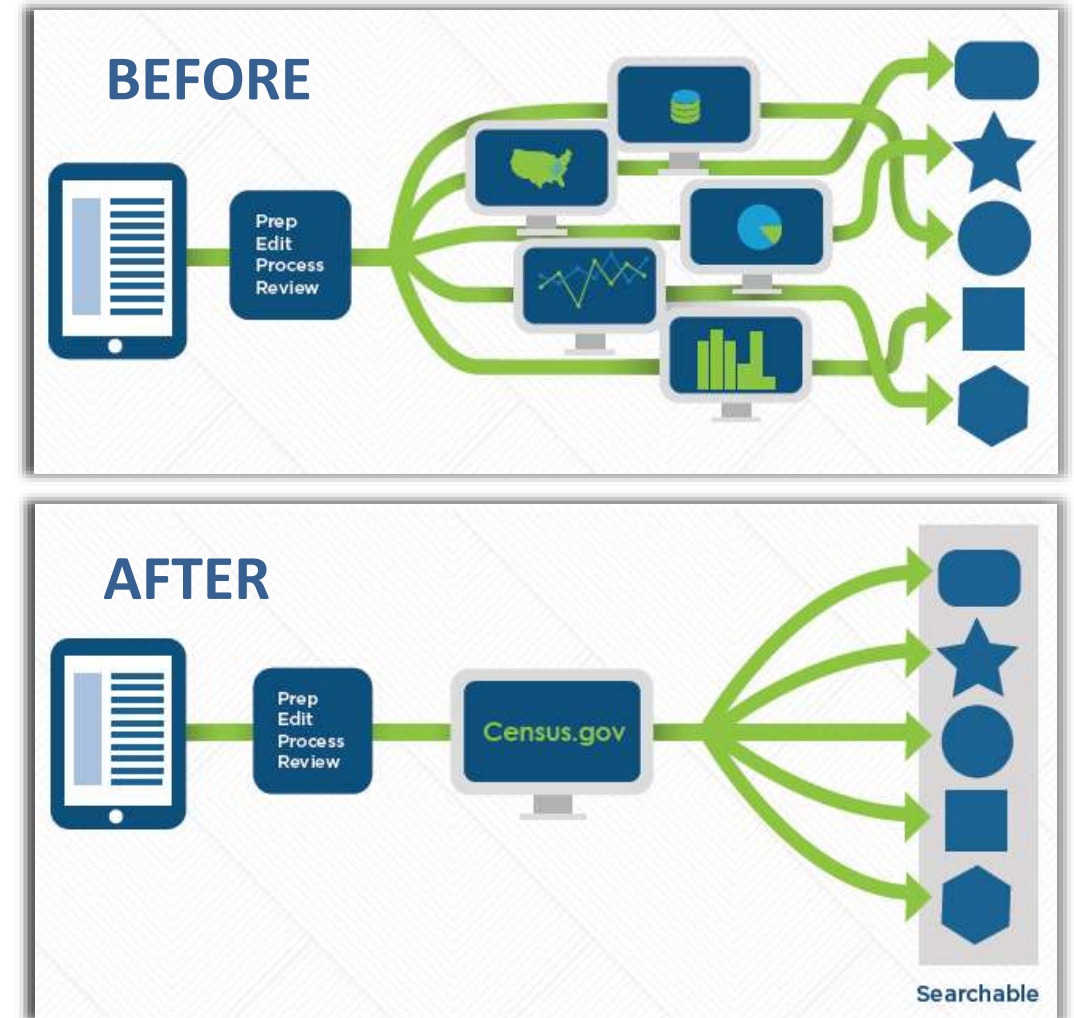
Call to Action

- *The Census Bureau collects and disseminates data on a variety of topics, through a vast array of data tools and apps.*
- *But, customers express frustration finding and using Census Bureau content online, so it's time to improve the process.*

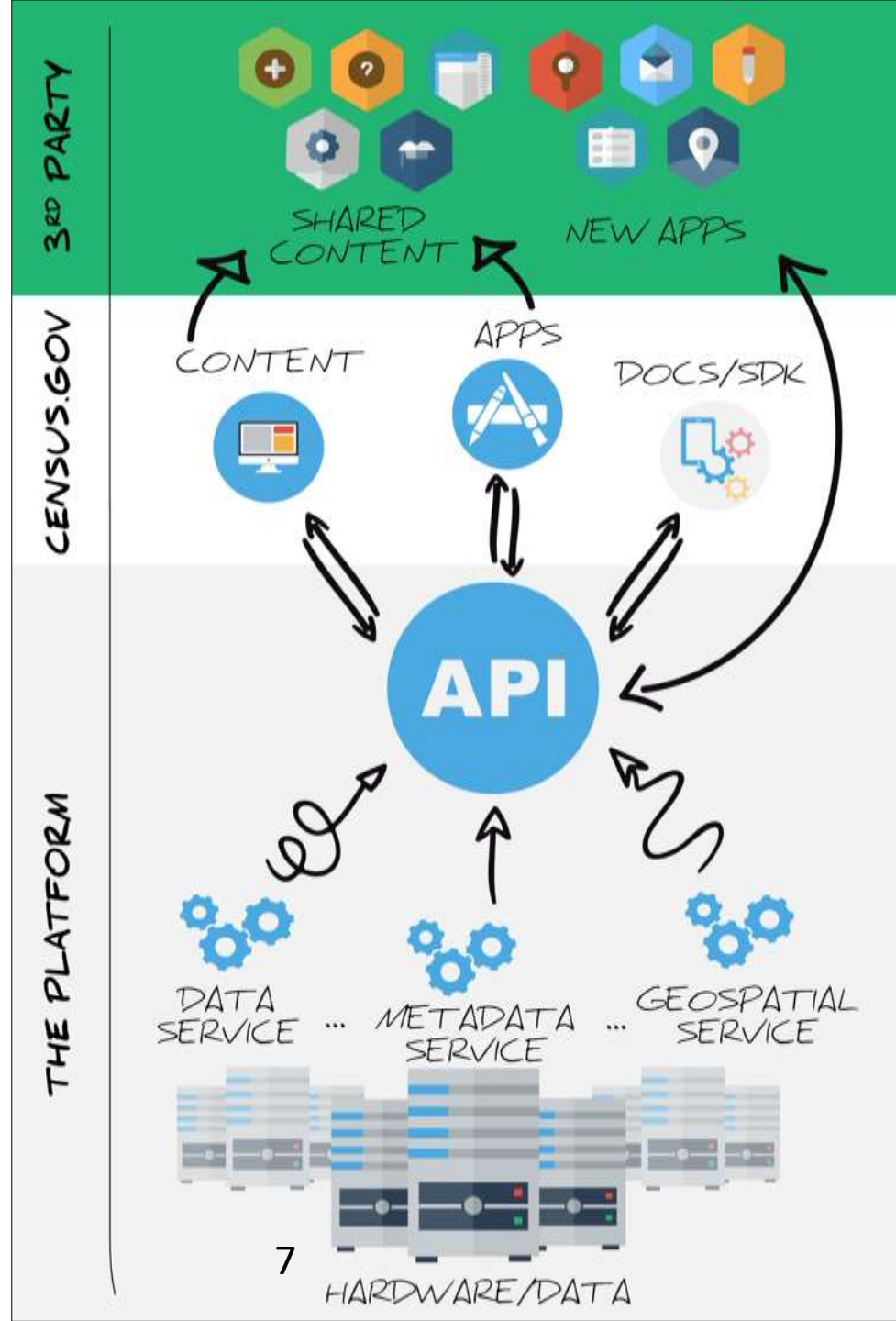


What is Enterprise Dissemination?

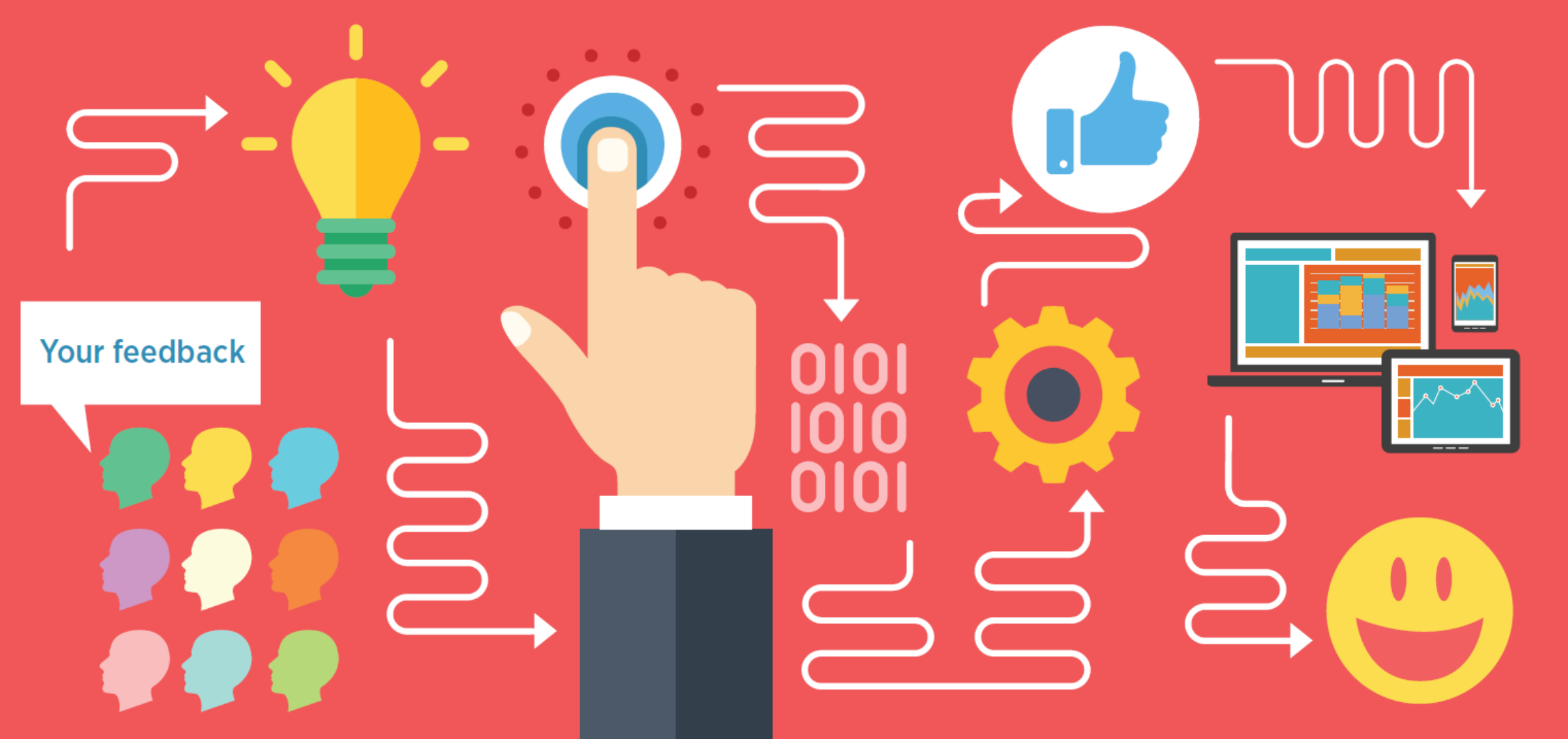
- Centralized and standardized metadata, data, and software
- A customer-oriented platform for easy access to Census Bureau data
- A single, efficient search for all data, content, and the API



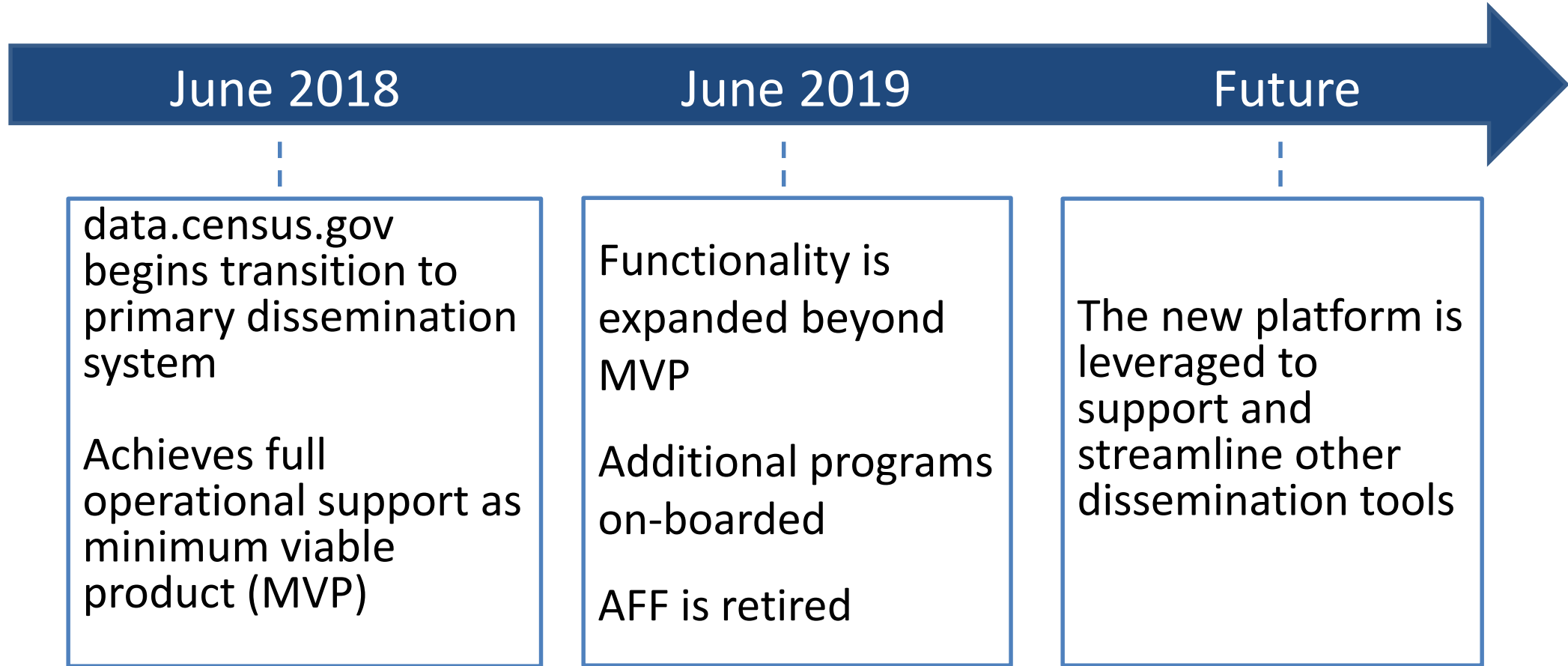
The New Dissemination Platform: How It All Works



Improving User Experience Depends on You!



Upcoming Milestones



June 2018 Release Goals

data.census.gov
transitions to primary
dissemination system

Achieves full
operational support as
minimum viable
product (MVP)

Goal	Focus
Support basic dissemination functionality	<ul style="list-style-type: none"> • Search and Relevancy • View and customize table • Add more data • Performance
Support Decennial 2018 End to End Test	<ul style="list-style-type: none"> • SF1 with support across all geographies • Embargo • Information Access (Download/Table)
Serve as the primary dissemination system for ACS products	Basic dissemination functionality is available for GCT, GRT, Iterative Products, Tier 1 Products, and Geo components

Capabilities

Search & Discovery

Search

- Census.gov Integration
- Search and Relevancy
- Advanced Search
- Results Pages

Data Profiles

- Geo Profiles
- Topic Profiles
- Industry Profiles

Data Visualizations

- Display and Customize graphs and charts
- Share and Export

Developer Experience

- Pattern Library
- Query Builder
- Unified API

Information Access

Table

- Table Viewer
- Download
- Share and Export

User Login

- Internal Login
- Embargo Process/Login

Map

- Select geographies on a map
- Thematically map data
- Reference map
- Share and Export

API

- Geo Access
- Data Access

Questions/Feedback?

Check out our preview site at data.census.gov

General feedback, please email: cedsci.feedback@census.gov

Rob Chestnut

Communications and Requirements
Center for Enterprise Dissemination
Services and Consumer Innovation
(CEDSCI)

U.S. Census Bureau

Thank you!