

Evaluation of Vendor School and Teacher Lists for the 2015-16 National Teacher and Principal Survey

Maura Spiegelman

National Center for Education Statistics

David Sheppard, Quentin Brummet

U.S. Census Bureau

FCSM 2018 Research and Policy Conference

March 9, 2018

This presentation is intended to promote ideas. The views expressed are part of ongoing research and do not necessarily reflect the position of the U.S. Department of Education or the U.S. Census Bureau.

Overview

- Overview of National Teacher Principal Survey (NTPS)
- Planning and analyses for 2014-15 Pilot Study
- Results of 2014-15 Pilot Study
- Results of 2015-16 NTPS main collection
- Planning for 2017-18 NTPS and beyond

National Teacher and Principal Survey (NTPS)

- Redesign of Schools and Staffing Survey (SASS)
 - Final year of SASS in 2011-12
 - Pilot test in 2014-15
 - First year of NTPS in 2015-16
- Surveys of schools, principals, teachers
 - Primary sampling unit is schools
 - Teachers sampled from school-completed Teacher Listing Form (TLF)

2011-12 Evaluation: Data Availability

	TLF	Vendor A	Vendor B	Vendor C
Teacher name	✓	✓	✓	✓
Full-time or part-time	✓	X	X	X
Subject area	✓	✓	✓	✓
Years of teaching experience	✓	X	X	X

2011-12 Evaluation: School Coverage

	Vendor A	Vendor B	Vendor C
Public	85%	86%	92%
Private	65% ¹	66%	60%
Charter Status			
Traditional Public School	89%	88%	96%
Charter School	39%	67%	89%
School Type			
Regular School	91%	91%	97%
Non-regular school²	38%	47%	80%

¹ Vendor A did not provide NCES ID for private schools. This is an estimate based on address-level matching.

² Non-regular schools include special education, vocational, and other/alternative schools.

2011-12 Evaluation: Teacher Coverage

	Vendor A	Vendor B	Vendor C
Public	71%	58%	56%
Private¹		35%	23%
Charter Status			
Traditional Public School	73%	59%	57%
Charter School	28%	26%	33%
School Type			
Regular School	72%	60%	57%
Non-regular school²	39%	27%	28%

¹ Vendor A did not provide NCES ID for private schools. This is an estimate based on address-level matching.

² Non-regular schools include special education, vocational, and other/alternative schools.

2014-15 Pilot Study: Procedures

Vendor A **provided**

- NCES school ID
- Teacher name
- Teacher e-mail
- Subject area

Vendor A **unable** to provide

- Full-time/part-time status
- Years of experience

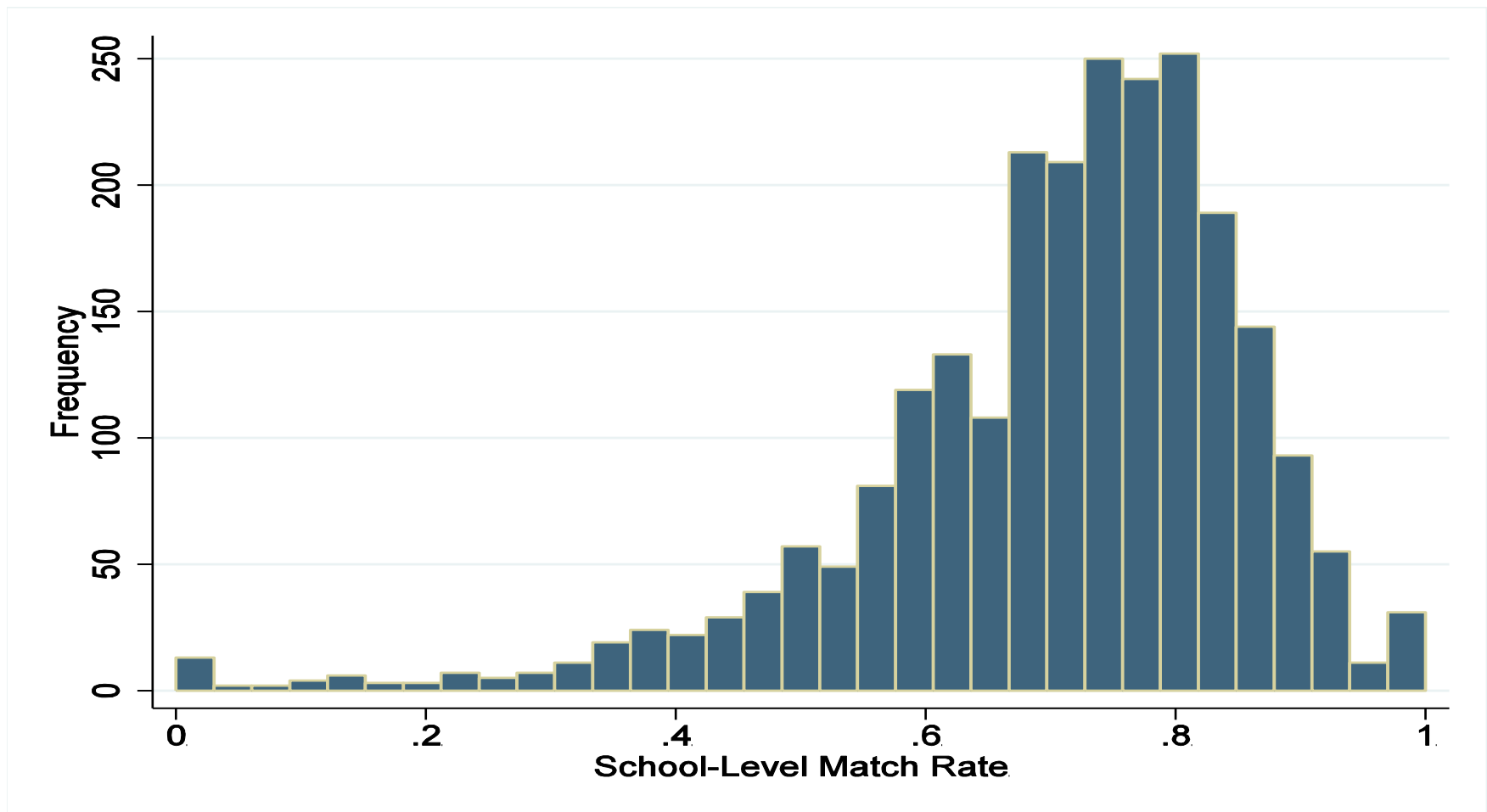
Sampled schools were mailed paper TLF to complete

2014-15 Pilot Study: Data Availability

	N	Percent of All Schools	Percent of TLF Responder Schools
TLF and Vendor Response Status:			
TLF Responder, Vendor Data Available	2,430	27%	93%
TLF Responder, Vendor Data Unavailable	180	2%	7%
TLF Clerical¹, Vendor Data Available	1,910	21%	-
TLF Clerical¹, Vendor Data Unavailable	60	<1%	-
TLF Non-Responder, Vendor Data Available	3,730	42%	-
TLF Non-Responder, Vendor Data Unavailable	640	7%	-
Total:			
All Schools	8,950	100%	-

¹ At the end of the mail-out operations, half of the nonresponding schools were sent to a TLF telephone follow-up operation aimed at collecting teacher list data over the telephone, and the other half were sent to a clerical operation aimed at obtaining teacher lists from school and/or district websites.

2014-15 Pilot Study: Match Rates across Schools



2014-15 Pilot Study: Match Rates between Traditional TLF and Vendor

	N	TLF – Vendor Match Rate
All teachers	108,860	72%
Teacher Experience		
First Year	6,440	7%
2-3 Years Experience	10,800	58%
4-19 Year Experience	62,760	77%
20+ Years Experience	23,060	83%
Missing	5,780	71%
Teacher Status		
Full Time	99,420	74%
Part Time	6,320	46%
Missing	3,130	74%

2014-15 Pilot Study: Resolving Differences between Traditional TLF and Vendor

	Percent of all Observations	Percent Correct	Percent of Incorrect Teachers who Used to Teach at School
Both Sources	44%	98%	68%
TLF Only	28%	89%	59%
Vendor Only	28%	40%	76%
N Schools	132		

TLF procedures for 2015-16 NTPS

- Completed by school (paper or online)
- Clerical research
- Vendor list

2015-16 NTPS: TLF completion

	Percent of All Schools	Percent of TLF Responder Schools
TLF and Vendor Response Status:		
TLF Respondent, Vendor Data Available	70%	87%
TLF Respondent, Vendor Data Unavailable	10%	13%
TLF Nonrespondent, Vendor Data Available	12%	-
TLF Nonrespondent, Vendor Data Unavailable	4%	-
Out of scope, Vendor Data Available	<1%	-
Out of scope, Vendor Data Unavailable	3%	-
Total:		
All Schools	100%	-

2015-16 NTPS: Teacher Questionnaire completion

	TLF respondents only	All TLF completion methods
TLF response rate	62%	84%
Teacher response rate (conditional on TLF completion)	78%	68%
Teacher response rate (overall)	49%	57%

Plan/actions for 2017-18

- Continue supplementing school-completed TLFs with vendor data
- Improve quality where possible
 - Dependent listing

- Private schools

Maura.Spiegelman@ed.gov