

# Researching the Psychology Workforce

Application of Federal Statistics in Analyzing Workforce Demographics  
FCSM Conference, March 2018



AMERICAN  
PSYCHOLOGICAL  
ASSOCIATION

Luona Lin, Karen Stamm, and Peggy Christidis

Center for Workforce Studies  
American Psychological Association



This presentation describes research and analysis conducted by staff members of the American Psychological Association's Center for Workforce Studies. It does not constitute official policy of the American Psychological Association.

# Research Questions

1) How many psychologists are there in the U.S.?

- How to define a psychologist

2) What are the demographic characteristics of the psychology workforce?

- Age, gender, race/ethnicity

# Data Sources

- American Community Survey (Census Bureau)
  - Annual survey on the entire U.S. population
  - Does not include field of doctorate degree
- Occupational Employment Statistics (BLS)
  - Annual survey that produces employment and wage estimates for occupations
  - Do not include self-employed psychologists
  - Include all degree levels for psychologists
- National Survey of College Graduates (NSF)
  - Biannual survey on bachelor's degree holders under age 76
  - Includes degree level and degree field

**2016 estimates of individuals in the workforce with occupation of psychologist and doctorate/ professional degree:**

**99,000**

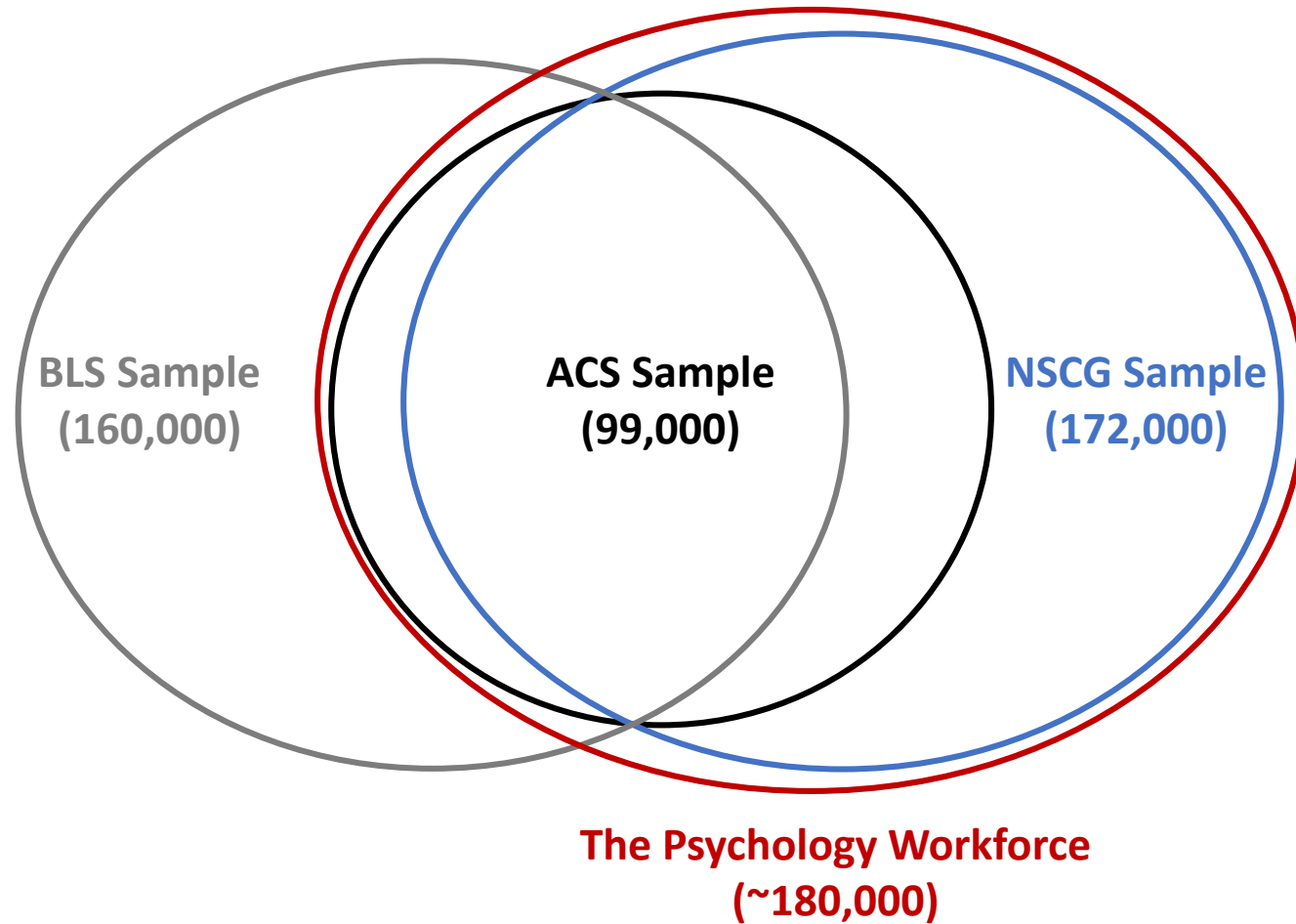
**2016 BLS estimates of clinical/ counseling/ school psychologists, industrial/ organizational psychologists, and other psychologists:**

**160,000**

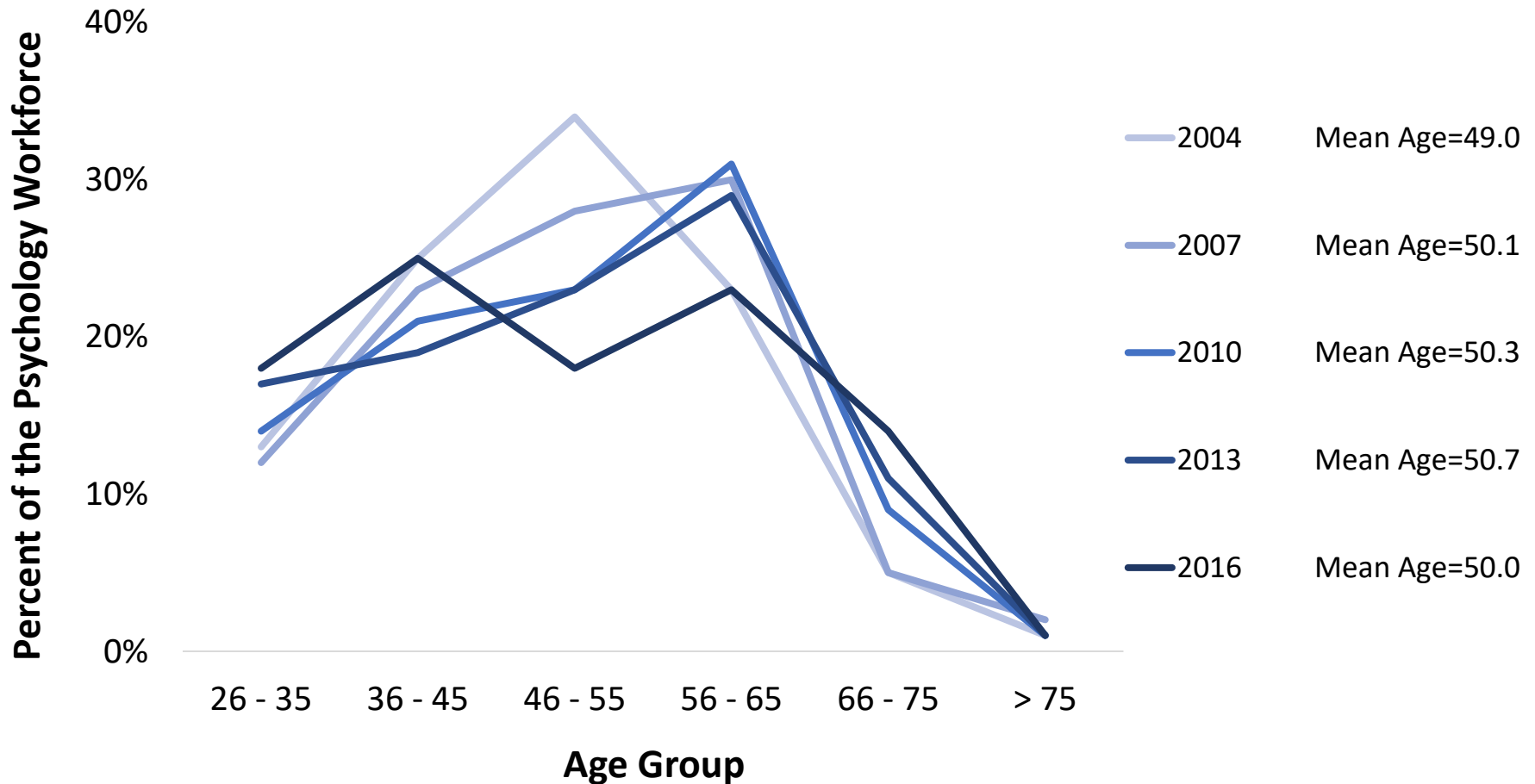
**2015 NSCG estimates of individuals in the workforce with doctorate/ professional degree in psychology:**

**172,000**

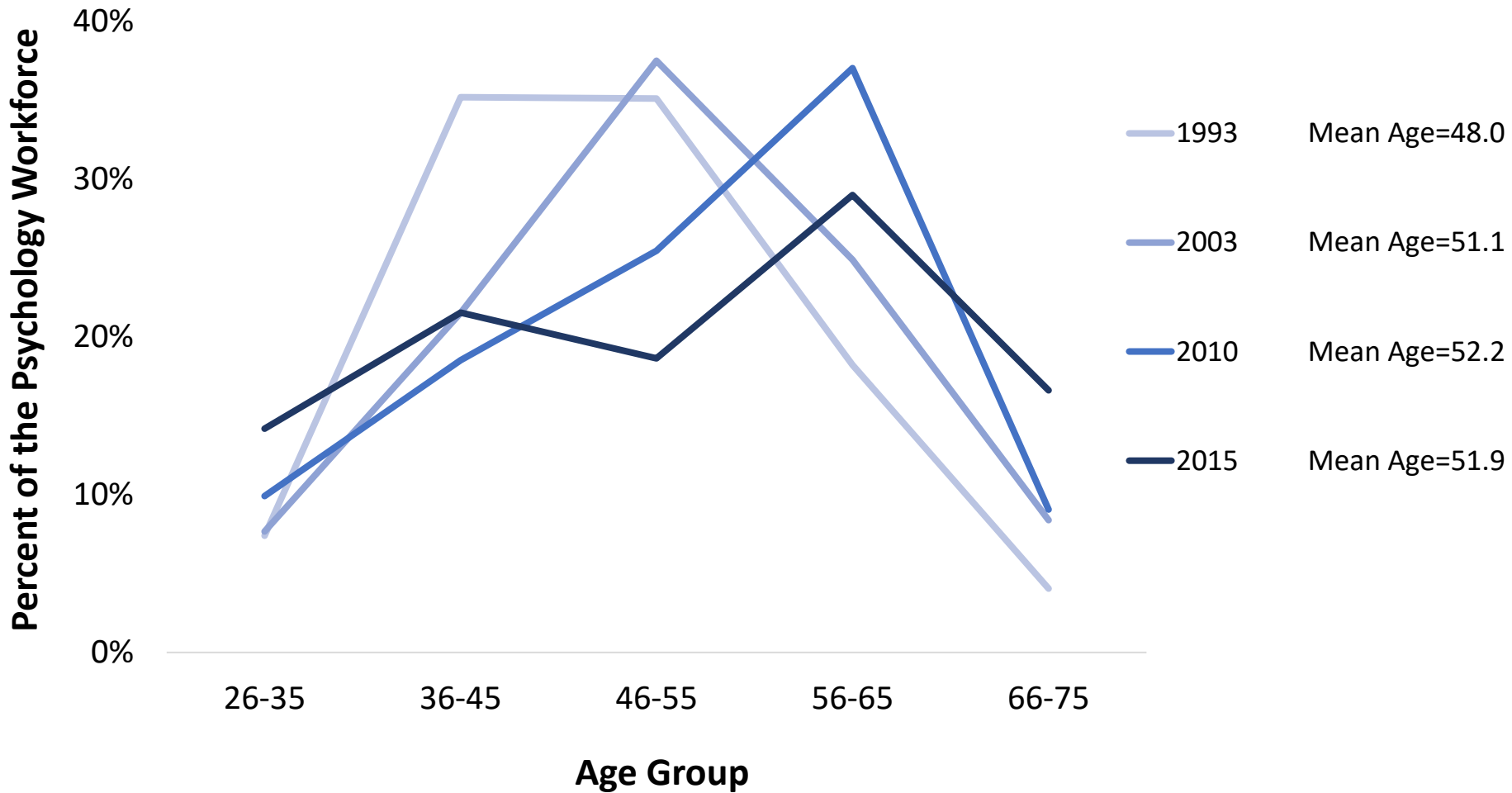
# Data Sources (Continued)



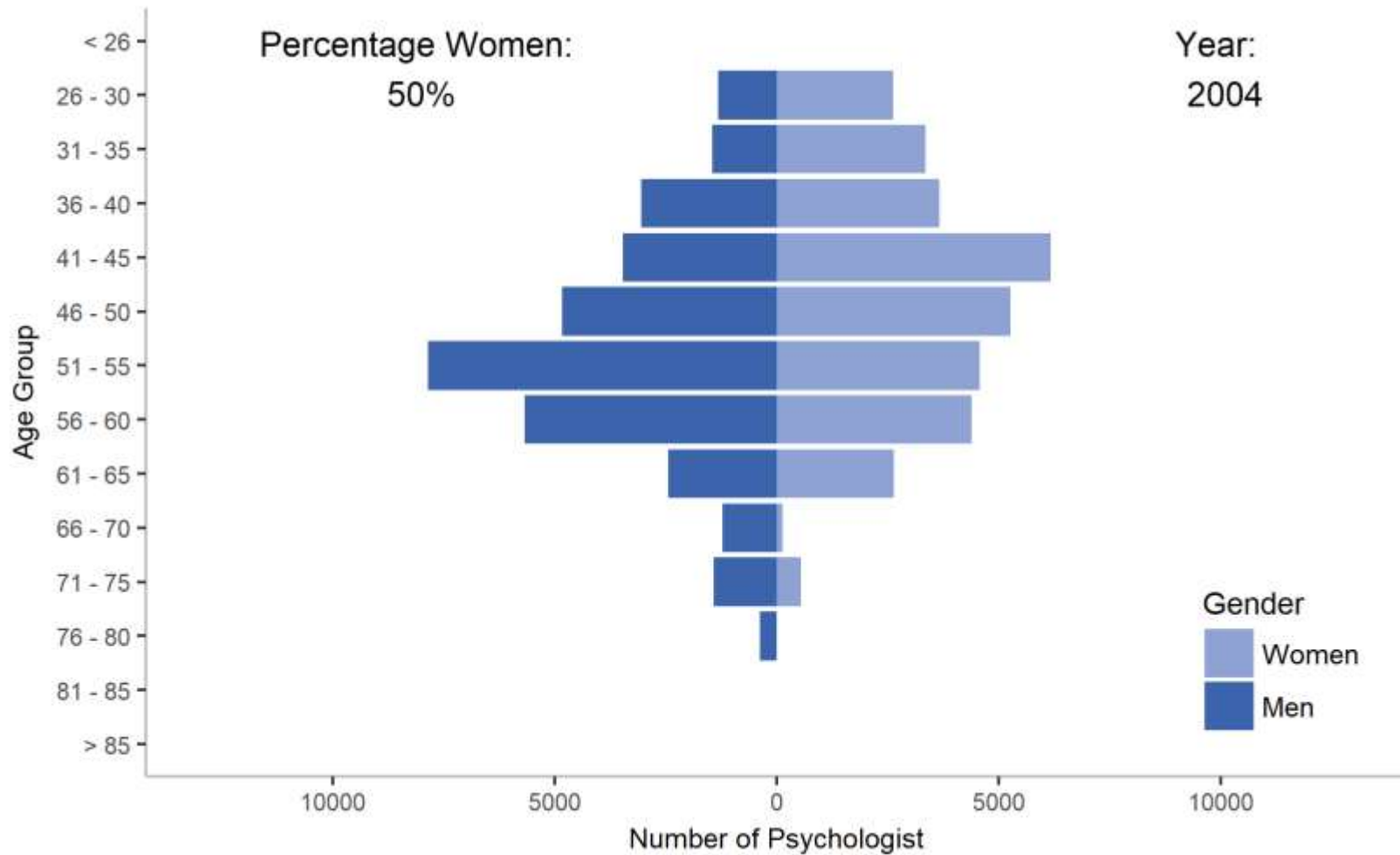
# Demographic Characteristics: Age (ACS)



# Demographic Characteristics: Age (NSCG)

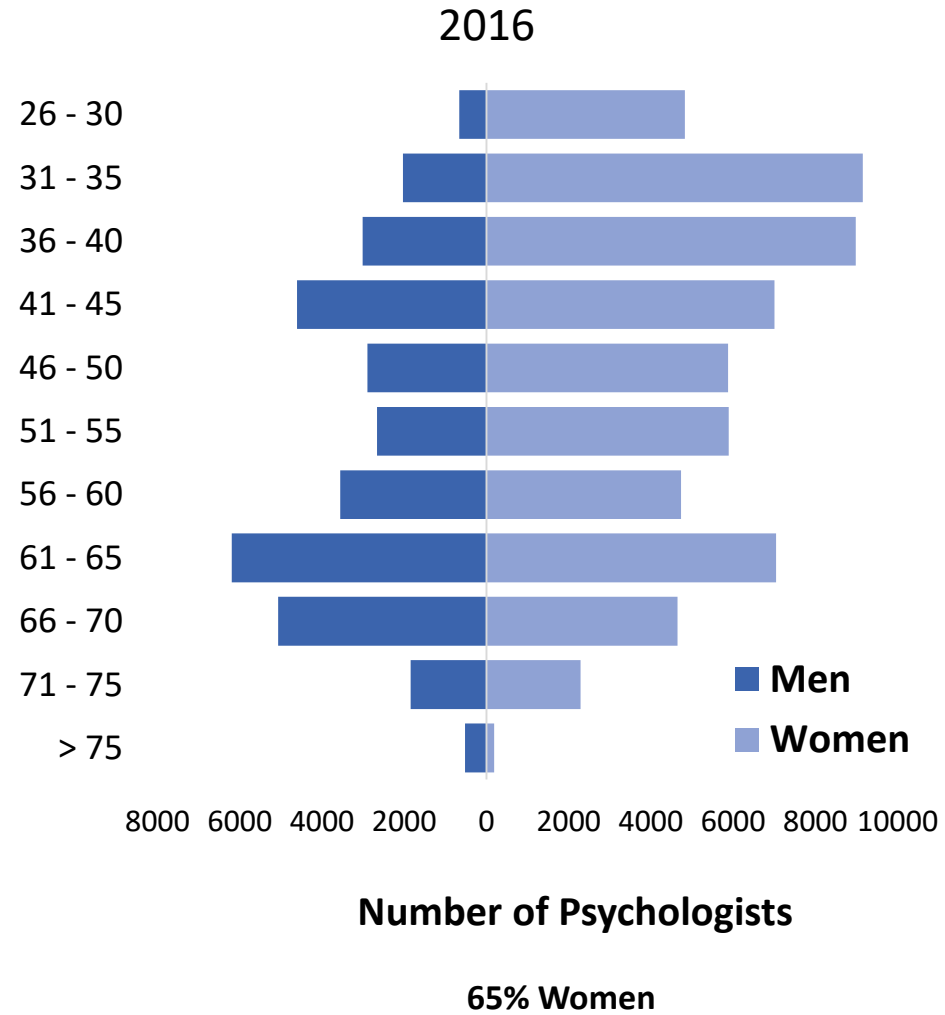
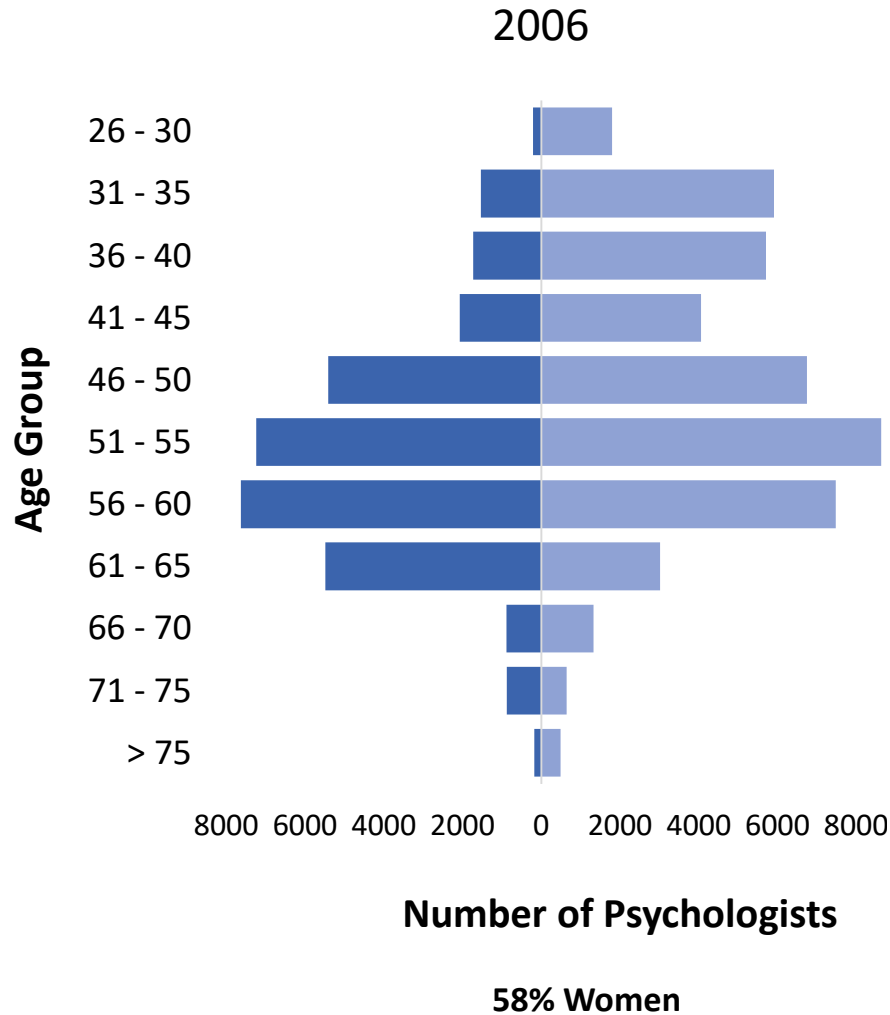


# Demographic Characteristics: Gender

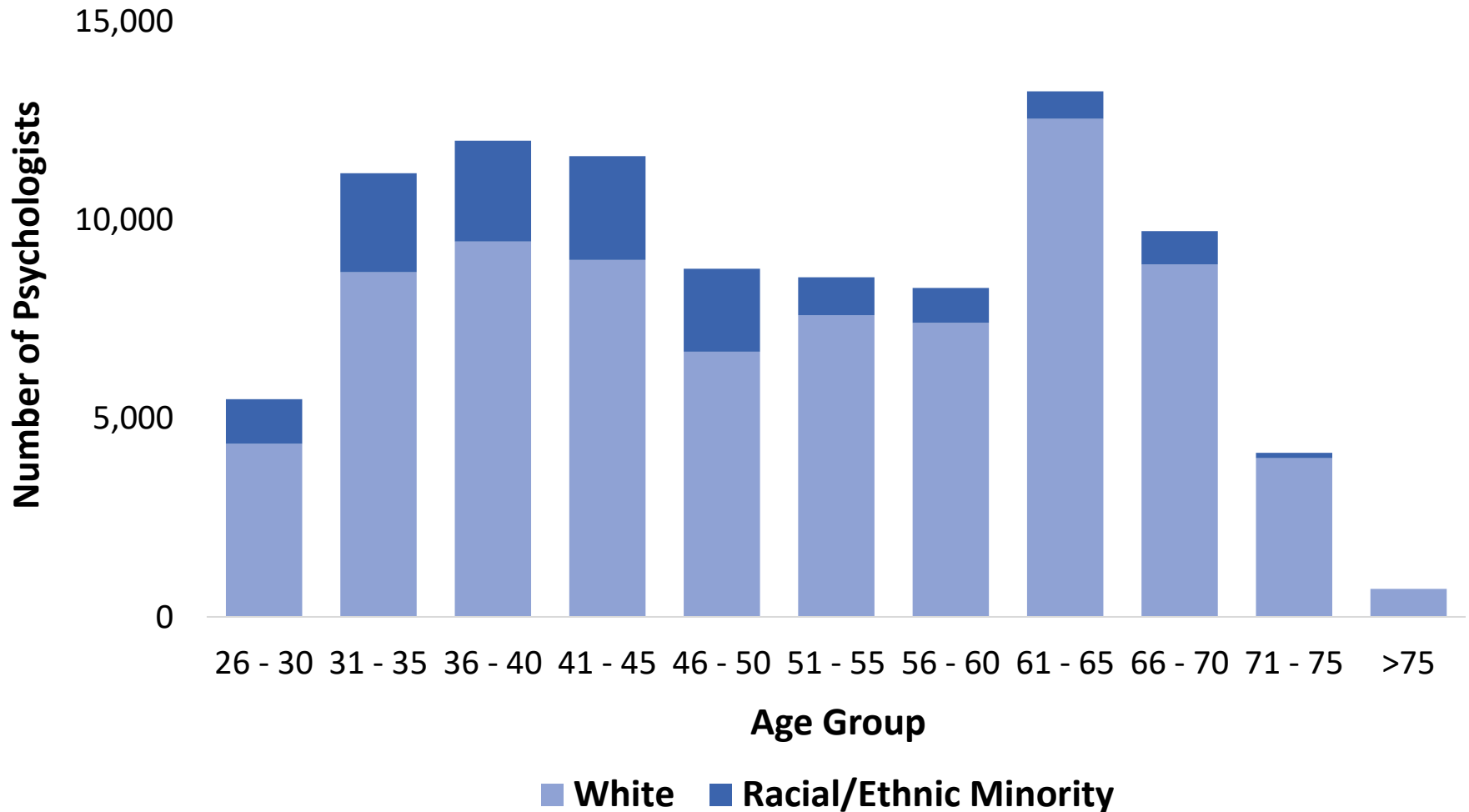




# Demographic Characteristics: Gender



# Demographic Characteristics: Race/Ethnicity



# Conclusion

- The demographic of the psychology workforce is changing
  - The psychology workforce is becoming younger in general as the baby boomer generation retires and the echo boomer generation enters the workforce.
  - More women and racial/ethnic minority groups have been entering the psychology workforce.
- Different data sources paint similar (but slightly different) demographic picture of the psychology workforce.
  - Definition and research topic affect choice of data set
  - Findings reveal differences between segments within the workforce
  - Comparison and Triangulation allows for a more accurate and comprehensive picture of the workforce

# Thanks!

For an interactive version of this presentation, visit

<http://www.apa.org/workforce/data-tools/demographics.aspx>

For more information on the psychology workforce, visit

[www.apa.org/workforce](http://www.apa.org/workforce)

Contact us at [cws@apa.org](mailto:cws@apa.org)



AMERICAN  
PSYCHOLOGICAL  
ASSOCIATION

